

# Welcome!

## Resilient Beginnings Network Informational Webinar

August 24, 2020



MADE POSSIBLE BY  
**Genentech**  
*A Member of the Roche Group*

This webinar is being recorded and will be posted to [careinnovations.org/rbn-2020](https://careinnovations.org/rbn-2020)

Please use the **chat box** to ask questions.

Everyone is currently muted.  
To unmute yourself: **Press \*6**  
To mute yourself: **Press \*7**

# Agenda



**Background**



**Program Overview**



**Program Expectations**



**Application Process**



**Q & A**



# CCI Program Leads



**Tammy Fisher**  
Senior Director



**Alexis Wielunski**  
Program Manager



**Megan O'Brien**  
Senior Program Manager



**Nikki Navarrete**  
Program Coordinator



# Center for Care Innovations

Strengthening the Health and Well-Being of Underserved Communities



## Spark

New ways of working & creative problem solving



## Seed

The research, testing & implementation of fresh approaches



## Spread

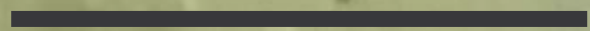
Successful innovations, so our network rapidly adopts best practices

# Poll #1

Where are you joining us from today?

- ☐ *In a **private** space in my clinic/organization*
- ☐ *In a **shared** space in my clinic/organization*
- ☐ *At home*
- ☐ *Outside*
- ☐ *In a car*
- ☐ *Other*





# Background

# A Word from Genentech



**Elizabeth Hawkins**

Senior Manager, Corporate Giving

Resilient Beginnings is a part of Genentech's philanthropic commitment to addressing childhood adversity across low-income communities in the Bay Area, called The Resilience Effect.

Our vision is one where all Bay Area children facing early adversity have the best possible start in life and the opportunity to build healthy and vibrant futures.

Learn more about the Resilience Effect:  
[www.gene.com/resilience](http://www.gene.com/resilience)

# RESILIENT BEGINNINGS COLLABORATIVE

MADE POSSIBLE BY

**Genentech**

*A Member of the Roche Group*

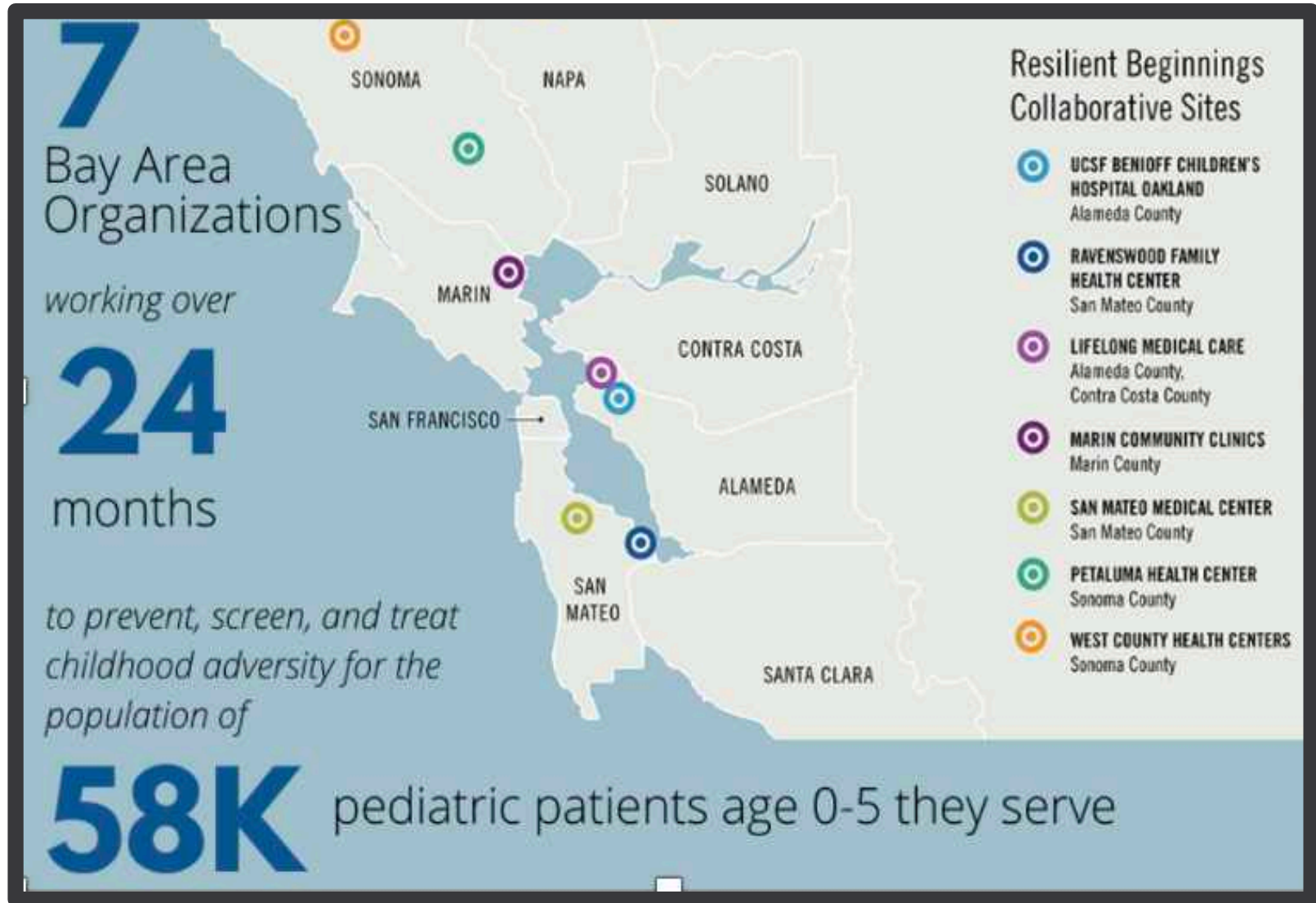
**7**  
Bay Area  
Organizations

*working over*

**24**  
months

*to prevent, screen, and treat  
childhood adversity for the  
population of*

**58K** pediatric patients age 0-5 they serve





# Resilient Beginnings Collaborative

Without [RBC] we would not have had the focus and support to do it. It gave us a framework, justified the time we did have, and we wouldn't have come together to organize this effort without the RBC grant. It definitely was very valuable.

This work is contagious in the best sense of the word. Once you start to really start to get what it means to deal with trauma you see it everywhere for better or worse. But once you see it from that light your ability to become passionate, be flexible, and reframe what the actual problem is improves.

"RBC work gave us good foundation of how to deal with this crisis and supporting staff and patients..."

In 2018, the Center for Care Innovations and Genentech Charitable Giving launched a collaborative to address childhood adversity in pediatric safety net care settings.

# One Clinic's Experience



**Sandra Escobar, PhD**

**Integrated Behavioral Health Services  
Clinical Director**

Ravenswood Family Health Network is a federally qualified health center headquartered in East Palo Alto.

As a participating organization in RBC, Ravenswood:

1. Conducted trainings on trauma, resilience & organization culture
2. Started a Centering Parenting group
3. Screened for and addressed parental depression/anxiety

# Why Resilient Beginnings Network?



**Dayna Long, MD, FAAP**

Director, Center for Child and  
Community Health





# RBN Design Contributors

## Planning Group:

9

Advisors



## Interviews & Feedback Session with Safety Net Organizations:

24

Individuals

10

Organizations

8

Counties

# Program Overview

---



# What is Resilient Beginnings Network?

A 3-year learning program for approximately 15 San Francisco Bay Area safety net organizations that provide primary care to young children from birth to 5 years old.



# Program Goal

Advance **pediatric care delivery models that are trauma- and resilience-informed** so that 100,000 young children in the SF Bay Area and their caregivers have the support they need to **be well and thrive**.



**Environment:** Establish or deepen a trauma-informed and healing-centered environment, including support for staff



**Prevention & Promotion:** Promote resilience and protective factors that can help prevent and mitigate the damage from ACEs and toxic stress



**Clinical Practices:** Test, implement, and spread clinical practices to identify, respond to, and heal



**Community Relationships:** Build and strengthen community relationships so that referrals and coordination efforts meet needs



# What Makes RBN Unique?



Interdisciplinary  
Teams &  
Organizational  
Transformation

Time

Flexible Approach

Learning  
Community

# What We'll Cover

- Creating a welcoming and affirming **virtual or in-person environment**
- Training staff and clinicians in **trauma-informed care and anti-racism**
- Starting or spreading ACEs or early adversity **screening and response.**
- **Education and peer-to-peer support** for caregivers.
- **Clinician and staff experience,** including well-being, resilience, and burnout
- **Linkage and coordination** with community services and resources
- Influencing systems that impact families **beyond the clinical setting**



# Poll #2

How is primary care delivered for young children at this time at your organization?

- ☐ *Almost all virtual*
- ☐ *More than half virtual*
- ☐ *About 50/50*
- ☐ *More than half in person*
- ☐ *Almost all in person*
- ☐ *N/A or Unknown*

# Program Structure



## Year 1

- Understand the current state and strengthen capacity
- Engage with stakeholders to determine focus

>



## "Pitch"

>

## Years 2 & 3



- Go deeper in one or more key areas with a goal of implementation and spread:
  - Clinic/organizational environment
  - Prevention & promotion
  - Clinical practices
  - Community relationships



# Program Support & Delivery

## Bay Area Learning Community

Learning Sessions &  
Webinars

Coaching

\$120K Grants Over 3 Years

Affinity  
Groups

Site Visits

Online  
Community

Toolkits &  
Resources

Expert  
Consults

# Poll #3

How are organizational meetings and trainings happening at this time at your organization?

- ☐ *All or almost all virtual*
- ☐ *More than half virtual*
- ☐ *About 50/50*
- ☐ *More than half in person*
- ☐ *All or almost all in person*
- ☐ *N/A or Unknown*



---

# Program Expectations

# Participation Expectations

## Leadership Buy In & Engagement

- Join a coaching call
- Attend learning session
- Meet with team
- At least 1 other touch point

## Continuity and Dedicated Team

- Project lead
- Primary care provider
- Clinical leader
- Frontline staff
- Senior leader

## Participation in Program and Evaluation

- Full engagement in program activities
- Regularly share about your work
- Completion of deliverables and session pre-work

## Feedback & Contribute to Broader Learning

- Provide feedback about the program for improvement



# Measurement Strategy

## How & When



**Progress Reporting  
with Clinic-Defined  
Metrics**

- Quarterly Submission



**Capacity  
Assessments**

- At baseline and Annually



**Program Participant  
Interviews and  
Surveys**

- Annually



**Coaching Logs &  
Interviews**

*\*Evaluators &  
Coaches Only*



**Learning Activities**

- Post-Event Surveys

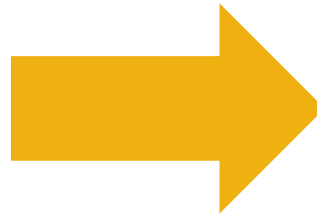
# Eligibility & Application Process

---



# Who's eligible to apply?

**San Francisco Bay Area-based organizations that provide comprehensive primary care services to underserved pediatric populations – children from birth to 5 years old and their caregivers who are uninsured or enrolled in Medicaid**



## Examples include:

- Federally qualified health centers (FQHC) and FQHC look-alikes
- Community clinics, rural health clinics, and free clinics
- Ambulatory care clinics owned and operated by public hospitals
- Indian Health Service clinics
- Pediatric or family practices caring for majority underserved patients (uninsured and Medicaid)



# How to Apply

**Applicant organizations must submit the following materials**

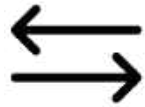
1. Application Form
2. Application Narrative
3. Budget Template
4. Tax Status Documentation
5. Letter of Leadership Support

**All materials must be received  
by 5:00PM PST on Friday,  
September 18, 2020**

# What makes a strong application?



Have at least one **primary care pediatric provider** that provides primary care for children birth to 5 years old



Commitment to change in their organization, specifically **deepening and spreading trauma- and resilience-informed** care in pediatric settings



Interest in applying an **equity and racial justice lens** for their work in the program



Willingness to both **teach and learn from peers** by deeply engaging in the program's learning community





# Important Dates & Timelines

**Application Deadline**

**Friday,  
September 18, 2020  
5PM**

**Cohort  
Announced**

**By Monday,  
October 19, 2020**

**Virtual  
Kick Off Session**

**Tuesday, November  
10, 2020 1-4pm**

# Program Page

All this information & more can be found here:

[www.careinnovations.org/programs/resilient-beginnings-network/](http://www.careinnovations.org/programs/resilient-beginnings-network/)

The screenshot shows the website for the Center for Care Innovations (CCI). The header includes the CCI logo, navigation links for 'Population Management', 'Innovation & Design Thinking', 'Technology Solutions', and 'Community-Centered Care', and a 'The Resource Center' button. The main banner features the title 'Resilient Beginnings Network' over a blue background with a geometric pattern. Below the banner, the 'OVERVIEW' section describes the partnership with Genentech Charitable Giving to launch the Resilient Beginnings Network (RBN). It states that RBN is dedicated to advancing pediatric care delivery models that are trauma- and resilience-informed, supporting about 15 San Francisco Bay Area safety net organizations. A 'RESILIENT BEGINNINGS NETWORK' logo is displayed, along with the Genentech logo. An 'APPLY NOW' button is at the bottom of the overview section. To the right, the 'About This Program' section lists the goal, partner (Genentech), program dates (November 2020 to October 2023), phase (Ongoing), and focus area (Community-Centered Care).

**OVERVIEW**

In partnership with Genentech Charitable Giving, we are launching the **Resilient Beginnings Network (RBN)**.

RBN is dedicated to advancing pediatric care delivery models that are trauma- and resilience-informed so that 100,000 young children and their caregivers have the support they need to be well and thrive. This three-year program will support about 15 San Francisco Bay Area safety net organizations.

**RESILIENT BEGINNINGS NETWORK**

**Genentech**  
A Member of the Roche Group

**APPLY NOW**

**About This Program**

**Goal:** To support organizations to advance pediatric care delivery models that are trauma- and resilience-informed.

**Partner:** Genentech

**Program Start:** November 2020

**Program End:** October 2023

**Phase:** Ongoing

**Focus Area:** Community-Centered Care



Q & A

# Thank you!

**For questions contact:**

**Alexis Wielunski**  
Program Manager  
Center for Care Innovations  
[alexis@careinnovations.org](mailto:alexis@careinnovations.org)

**Nikki Navarrete**  
Program Coordinator  
Center for Care Innovations  
[nikki@careinnovations.org](mailto:nikki@careinnovations.org)