

PHASE

Preventing Heart Attacks & Strokes Every day



Grantee Welcome Webinar
February 7, 2020

 KAISER PERMANENTE®

PHASE



PREVENTING HEART ATTACKS
& STROKES EVERY DAY

Webinar Housekeeping



1. Lines are muted. Press *7 to **unmute** and *6 to **re-mute** yourself.
2. **Please do not put us on hold!**
3. Feel free to chat in questions
4. Webinar is being recorded and will be posted on the PHASE Support site. A link will be sent via email.
5. Please fill out our feedback survey at the end of the webinar
6. As we are getting started, please type in your name and organization in the chat box

PHASE 2020 Grantees

Clinic Consortia	Public Hospitals and Health Systems	Community Health Centers
Community Health Center Network	Alameda Health System Foundation	Chapa-De Indian Health Program
Community Health Partnership	San Joaquin General Hospital	Community Medical Centers
Redwood Community Health Coalition	San Mateo Medical Center	Elica Health Centers
San Francisco Community Clinic Consortium	San Francisco General Hospital Foundation	Golden Valley Health Centers
		One Community Health Valley Health Team

Participant Objectives



- **Celebrated** what we have achieved
- **Understood** the program elements of PHASE 2020 (what is the same, what is different)
- **Connected to PHASE** support partners and their respective roles, and the PHASE 2020 cohort
- **Examined** program elements and requirements (TA, coaching, & evaluation strategy)
- **Outlined** next steps for kicking off projects
- **Obtained clarity** on questions

Kaiser Permanente

PHASE 2020 Overview

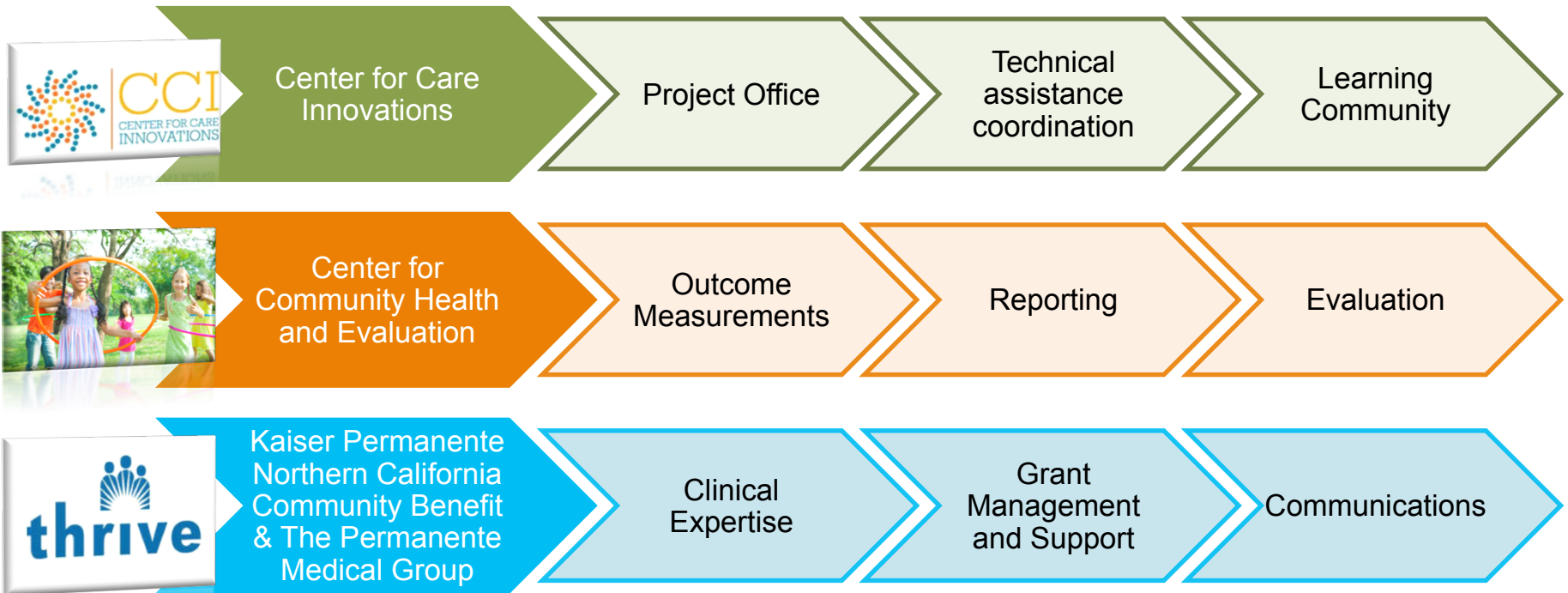
Celebrating the success of PHASE in our communities and looking to the future

- We look forward to working with you to continue to improve and deepen the outcomes and impact of PHASE in our communities
- We will be working together to advance equity in our overall approach to reducing the risk of heart attacks and strokes in all of our patient populations
- Our joint efforts will also be geared to build the PHASE approach to population health and chronic condition management for sustainability in your organizations and becoming the standard of care in 2020 and beyond.

Goals for PHASE 2020

1. Manage chronic conditions of high-risk populations to decrease their risk of cardiovascular disease (CVD) and/or cardiovascular events.
2. Improve ability to screen for key CVD risk factors as well as the ability to follow-up with patients who have those risk factors.
3. Advance health equity by achieving high performance for all populations on measures impacting cardiovascular health.

PHASE Support Team



Michael Rothman, *Executive Director*
Center for Care Innovations

Center for Care Innovations

CCI Program Team



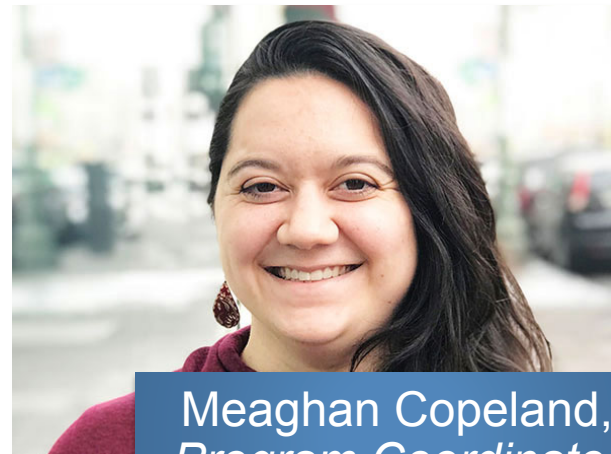
Michael Rothman,
Executive Director



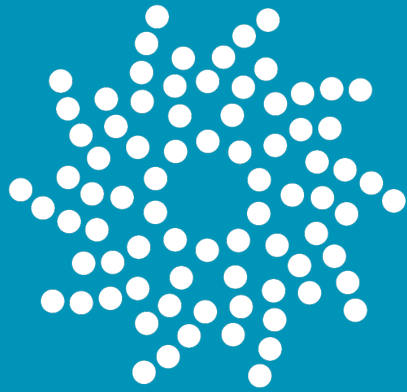
Juliane Tomlin, *Senior Manager*



Alexis Wielunski,
Program Manager



Meaghan Copeland,
Program Coordinator



CCI

CENTER FOR CARE
INNOVATIONS

20 years of strengthening the safety net



OUR GOAL

CCI strives to build an ecosystem that supports **healthy people and healthy communities.**



WHAT WE DO

CCI transforms health and health care for underserved populations by **inspiring, teaching and spreading innovation** among the organizations that serve them



FOCUS AREAS

- 1 Population Management
- 2 Technology Solutions
- 3 Innovation & Design Thinking
- 4 Community Centered Care



CCI's Role in PHASE



Juliane Tomlin, Senior Manager



Overview of Learning Community & Technical Assistance

Areas of Focus & Timeline

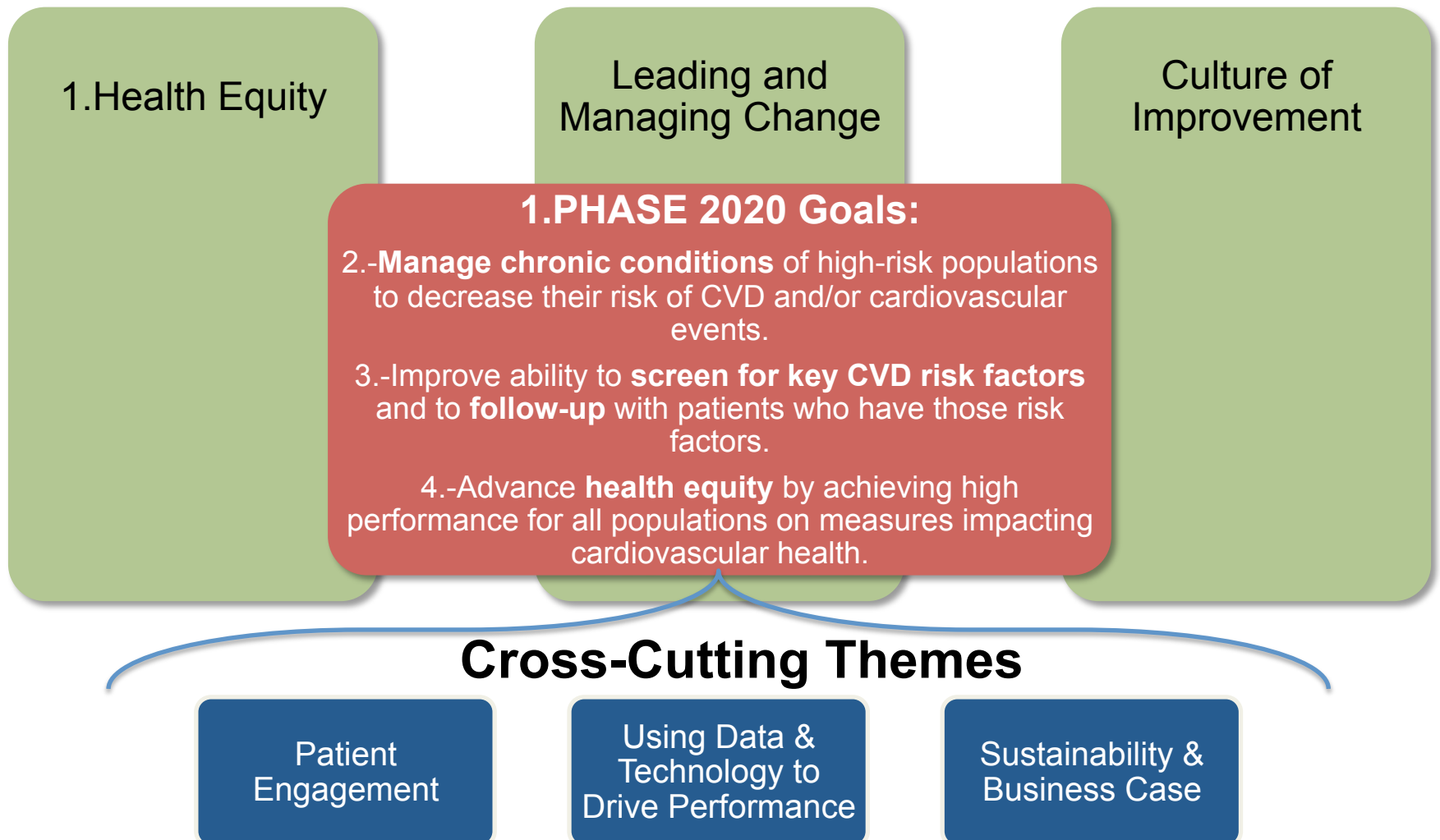


PHASE



PREVENTING HEART ATTACKS
& STROKES EVERY DAY

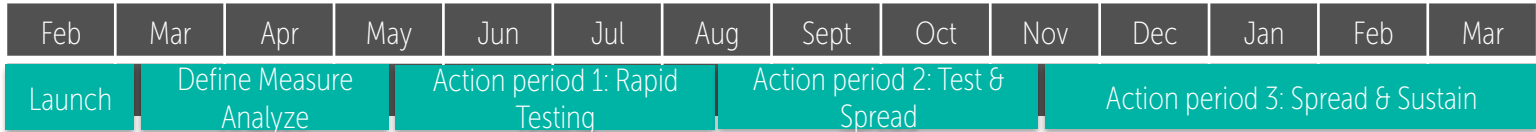
PHASE 2020 Focus Areas



Program Roadmap

2020

2021



In-Person Learning Sessions * & Site Visits

Learning Session / Convening 1 (3/31)

Learning Session / Convening 2 (TBD)

2 Peer Learning Site Visits

Learning Session / Convening 3 (TBD)

Webinars *

Kick Off Webinar (2/7)

Share & Learn Webinar

Wireside Chat Clinical Webinar (TBD)

Share & Learn Webinar

Coaching * **(Includes monthly calls, 1 on-site visit)**

Additional TA: **Virtual Resources, Trainings, Comms of Practice**

Grantee Deliverables*

Project Charter

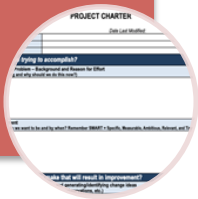
Storyboard Draft 1

Final Storyboard

PHASE 2020 Program Deliverables

- Problem Statement
- Project Aim
- Driver Diagram
- Measurement Strategy
- Team

Charter



- Health Equity
- Improving chronic condition management / decrease risk of CVD

2+Improvement Projects



- Outlines story of the *amazing progress* you made!
- Supports sustainability strategy!

Storyboard



Grantee Deliverables*

Project Charter

Storyboard Draft 1

Final Storyboard

Project Requirements by Role

Executive Leadership Sponsor:

- Join coaching call 2x / yr
- Participate in on-site coach visit
- Attend at least one Learning Session

Clinic Sites:

- Clinical and administrative leadership identified as champions and engaged at each site
- Building improvement capability across PHASE building blocks
- Take advantage of TA offerings

Coaching:

Meet Master Coach, Denise Armstorff

- More intensive approach, focusing on building your QI capabilities in your organizations
- Helps us keep a better pulse on where additional needs might be - which we will build into our curriculum in response (in person LS, S&L Webinars, etc.)



PHASE Evaluation overview

Center for Community Health and Evaluation

CCHE designs and evaluates health-related programs and initiatives, including policy and advocacy campaigns, throughout the United States.

Our mission is to improve the health of communities with collaborative approaches to planning, assessment, and evaluation.



Maggie Jones
Director



Carly Levitz
*Evaluation and
Learning Associate*

Evaluation purpose

The purpose of the evaluation is to:

Assess

impact on population health and
grantee capacity

Support

cross-grantee learning

Drive

program improvement

Inform

the field about best practices and
stories of impact

Evaluation requirements

The evaluation will ask grantees to:

Report

clinical data quarterly

Complete

the Building Blocks assessment at the end of the grant period

Participate

in reflective conversations annually and data interpretation conversations quarterly during coaching calls

Respond

to feedback surveys about TA (e.g., convenings, annual survey)

What is different about the PHASE evaluation in 2020?

Building Blocks

added Patient-Team Partnership domain to the assessment you completed in the fall 2019

Unblinded data

asking grantees to share unblinded data for learning purposes

Equity focus

supporting grantees' efforts in advancing equity by collecting relevant clinical data on grantee-identified disparities

Medication measures

refined to be in alignment with external reporting requirements

Quarterly reported clinical measures

Instead of providing specifications, we will direct grantees to publicly available specifications

	Measure	Alignment	Benchmark for High Performance
	Clinic sites participating	N/A	
Modified	Patients reached (unduplicated count of patients in denominator of below measures with *)	N/A	
	Hypertension blood pressure control*	CMS 165 / NQF 0018	National Medicaid HEDIS 90th percentile value
	Diabetes blood pressure control*	NCQA HEDIS / NQF 0061	National Medicaid HEDIS 90th percentile value
Modified	A1c poor control (A1c > 9%)*	CMS 122 / NQF 0059	National Medicaid HEDIS 90th percentile value
New	Patients at high risk of CVD who were prescribed or were on statin therapy*	CMS 347	UDS national average value
	Depression screening & follow-up	CMS 2 / NQF 0418	UDS national average value
	Tobacco use: screening & cessation intervention	CMS 138 / NQF 0028	UDS national average value
	BMI screening & follow-up	CMS 69 / NQF 0421	UDS national average value
New	Disparity data	N/A	(Grantee chooses subpopulation and measure of focus)

Evaluation calendar

	2020				2021	
	Q1	Q2	Q3	Q4	Q1	Q2
Quarterly clinical data reports due (including disparities data)	1/31	4/30	7/31	10/31	1/31	4/30
Quarterly data check-in (in conjunction with coaching call)	●	●	●	●	●	
Annual reflective calls					●	
PHASE Building Blocks Assessment					●	
End-of-grant web-based survey					●	



Ready, Set, Go!

Some guidance as you get ready!

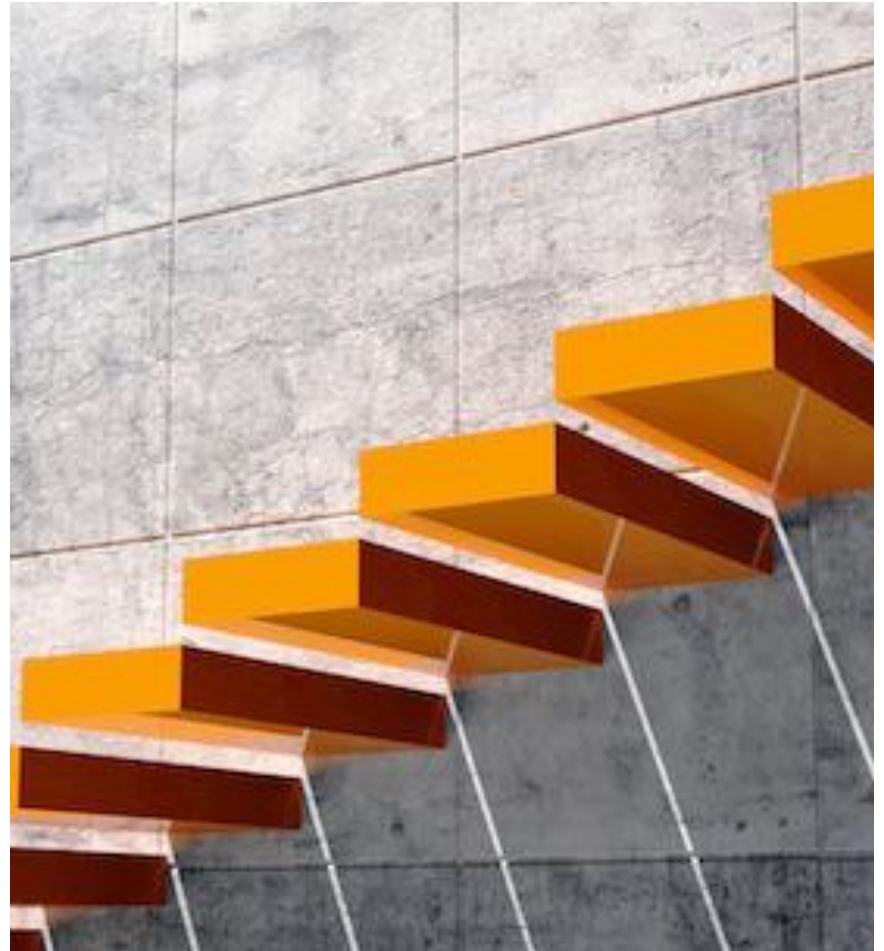
Some Inspiration!



<https://vimeo.com/292999862>

PHASE 2020: Next Steps

- **Schedule your 1st coaching call** with Denise!
- **Register by March 10** for our first Learning Session:
 - **Date:** *March 31, 2020*
 - **Location:** *DoubleTree Berkeley Marina*
 - **Time:** *8:30-5:00 (includes celebratory reception!)*
- **Prework:** Develop a draft PHASE 2020 charter with your team (*template and tutorial will be sent in this month's newsletter*)





QUESTIONS?

Wrap Up & Next Steps



As we get going, what one thing are you individually most excited about?

<Please type your answer in the Chat Box>

Contact Us!

Kaiser Permanente: grant budgets, grant reporting, no-cost extensions, scopes of work

Michael Cox: Michael.P.Cox@kp.org

CCI: technical assistance questions, program team updates (contacts), questions about the program, in-person meeting information, finding resources

Meaghan Copeland: meaghan@careinnovations.org

Juliane Tomlin: juliane@careinnovations.org