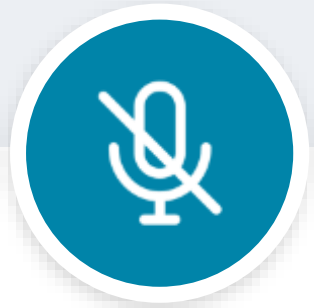


Welcome!

Addiction Treatment Starts Here
Equity-Centered Community
Learning Collaborative
Informational Webinar
November 15, 2022, 12-1pm



Mute

Minimize Interruptions

Please make sure to mute yourself when you aren't speaking.



Chat

Go Ahead, Speak Up!

Use the Zoom chat to ask questions and we will answer them during Q&A.



Naming

Add Your Organization

Represent your team and add your organization's name to your name. You can also add your pronouns.



Tech Issues

Here to Help

Chat **Lydia Zemmal** or **Angela Sherwin** privately if you are having issues and need tech assistance.



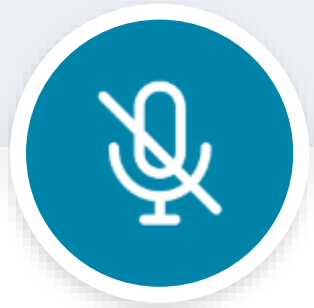
This webinar is being recorded and will be shared after the session.



Addiction Treatment Starts Here Equity-Centered Community Learning Collaborative



I Housekeeping



Mute

Minimize Interruptions

Please make sure to mute yourself when you aren't speaking.



Chat

Go Ahead, Speak Up!

Use the Zoom chat to ask questions and participate in activities.



Naming

Add Your Organization

Represent your team and add your organization's name to your name.



Tech Issues

Here to Help

Chat **Lydia Zemmali** or **Angela Sherwin** privately if are having issues and need tech assistance.



Connecting Your Phone to Zoom Audio



Step 1

Find “Mute”

At the bottom of your Zoom screen, click the upside-down carrot (^) next to “Mute.”



Step 2

“Switch to Phone Audio”

Choose the option “Switch to Phone Audio” in the list.



Step 3

“Phone Call”

In the pop-up, make sure the “Phone Call” tab is selected. Follow the instructions.



Step 4

Enter Your IDs

Enter your Meeting ID and Participant ID.
Do not skip this step!



I Agenda

- 1 Welcome and Introductions
- 2 Program Background
- 3 Program Design & Overview
- 4 Eligibility & Application Process
- 5 Key Dates
- 6 Q&A





Welcome & Introductions

Please chat in your name and organization!

ICCI Program Team



Lydia Zemmali
She/Her/Hers
Program Coordinator



Briana Harris-Mills
She/Her/Hers
Program Manager



Angela Sherwin
She/Her/Hers
Program Manager



Juliane Tomlin
She/Her/Hers
Director



Kristene Cristobal
She/Her/Hers
Program Consultant





OUR MISSION

We spark, seed, and spread innovations that strengthen the health and well-being of historically underinvested communities. We create lasting change in collaboration with our partners in the health ecosystem.



Program Background

Addiction Treatment Starts Here

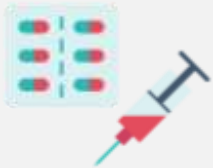
Foundational Work



For 6 years, CCI worked with ~100 primary care health centers in California to design new or expand existing programs to provide medications for addiction treatment (MAT).



Number of active MAT prescribers increased by 191 providers, equivalent to more than two active prescribers per participating clinic.



Combined increase of >2,199 patients receiving MAT. Many participants doubled or tripled the number of patients accessing MAT for OUD.



Improvements across 7 dimensions (*e.g., Infrastructure, clinic culture & environment, patient identification & initiating care, care delivery, care coordination, workforce, etc.*), by developing policies and procedures, conducting clinic-wide trainings on stigma, and more.

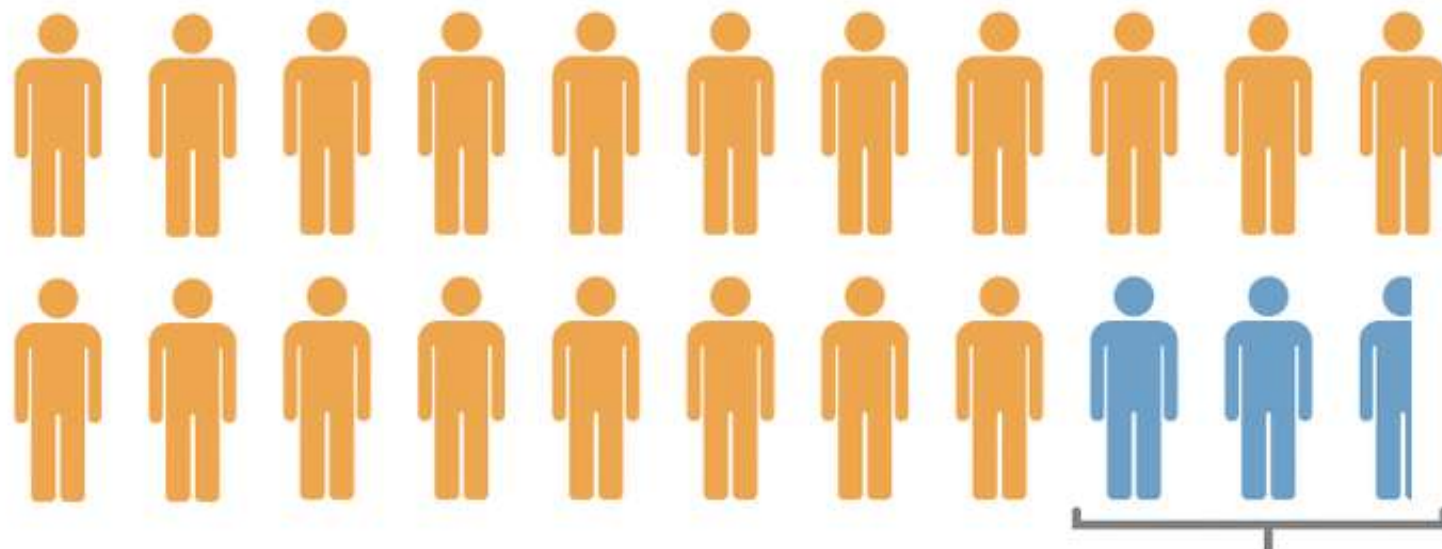


But we need to go deeper...

Most Who Need Treatment for Substance Use Disorders Don't Receive Any

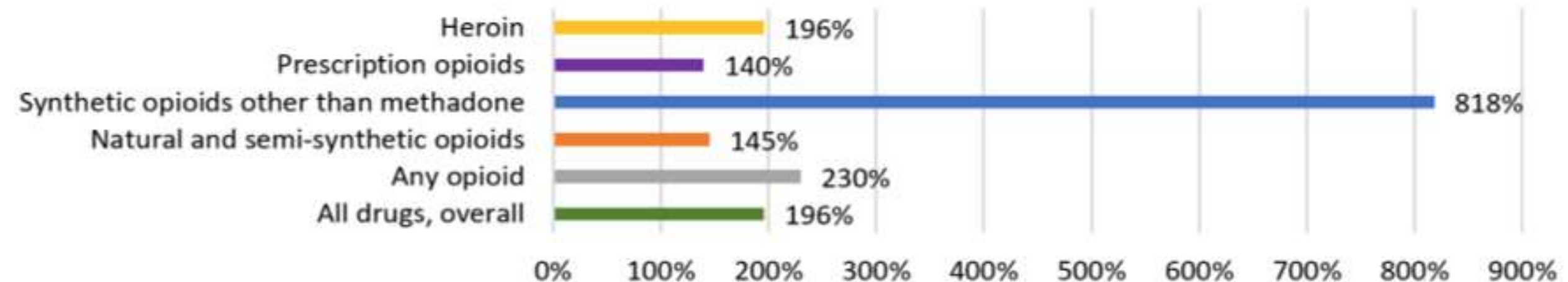
1 million people

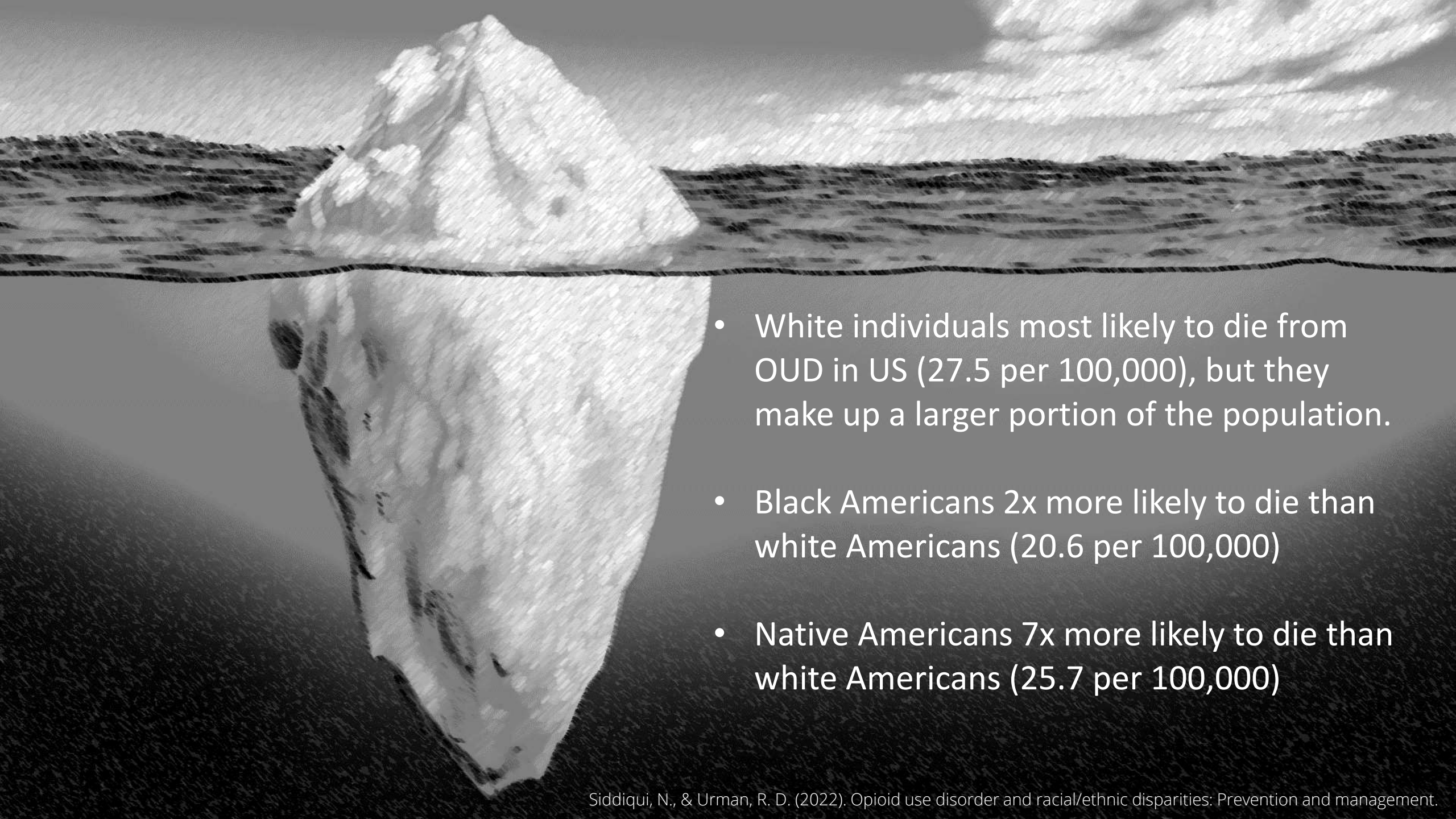
In 2019, 21.6 million people needed treatment...



but just 2.6 million received any.

Figure 1. Percent Increase from 2014 to 2017 in overdose death rates by drug among the non-Hispanic Black population in the United States, data from CDC National Vital Statistics System





- White individuals most likely to die from OUD in US (27.5 per 100,000), but they make up a larger portion of the population.
- Black Americans 2x more likely to die than white Americans (20.6 per 100,000)
- Native Americans 7x more likely to die than white Americans (25.7 per 100,000)

What explains these disparities?

Stigma	Stereotypes	History	Transportation	Access to care
Racism	Gaps in Knowledge	Geography	Employment	Cultural beliefs
Discrimination	Policies	Lack of culturally responsive care	Poverty	Unequal criminalization
Implicit Bias	Laws	Insurance status	Education	Negative representations



Chat Box Activity

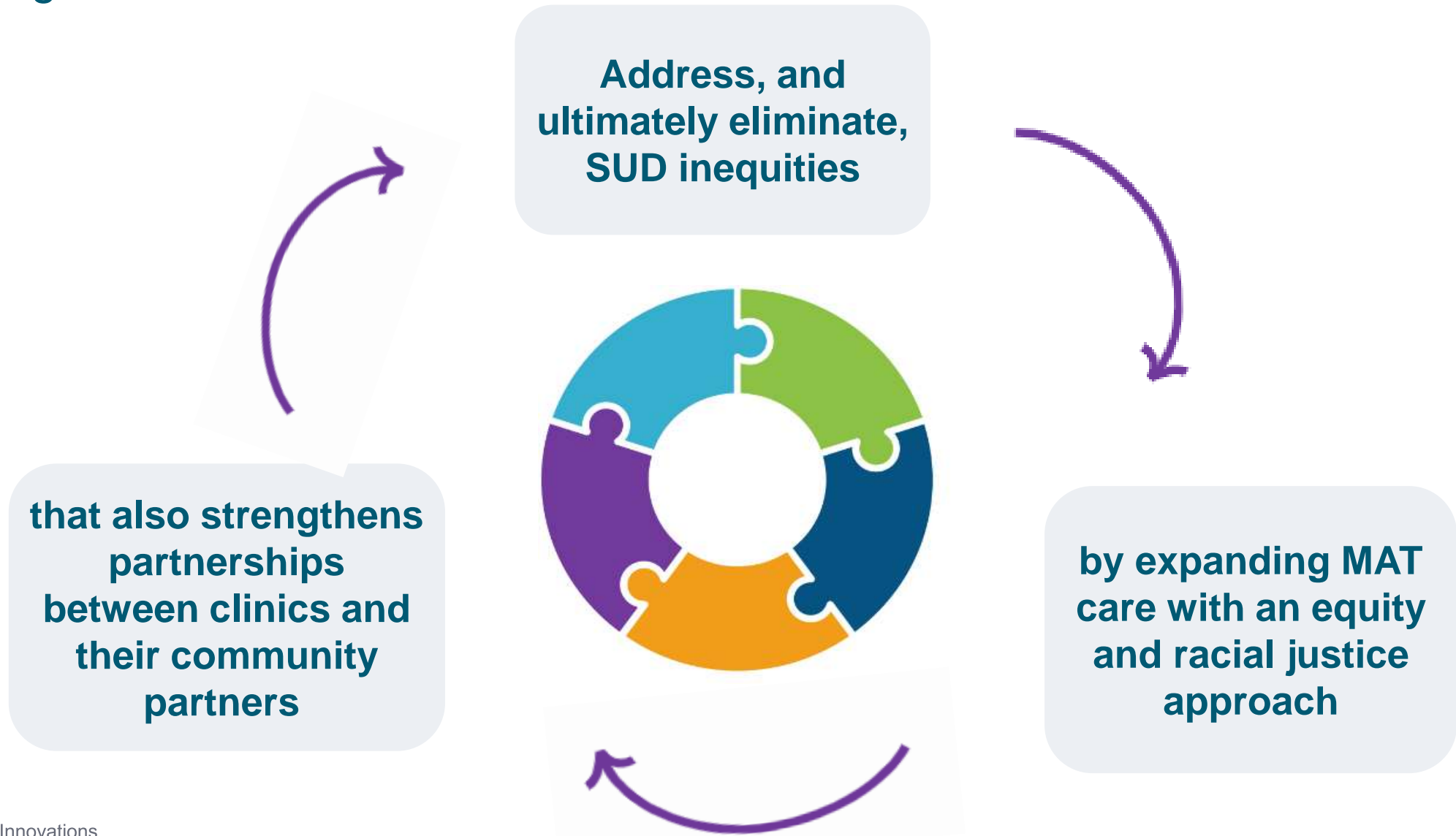
Type Into the Chat Box

What are the inequities in SUD that are pertinent to your patient population?



ATSH Equity-Centered Community Learning Collaborative

Program Goal





Program Design & Overview

| CCI's 2023-2024 ATSH Programming

Equity Collaborative

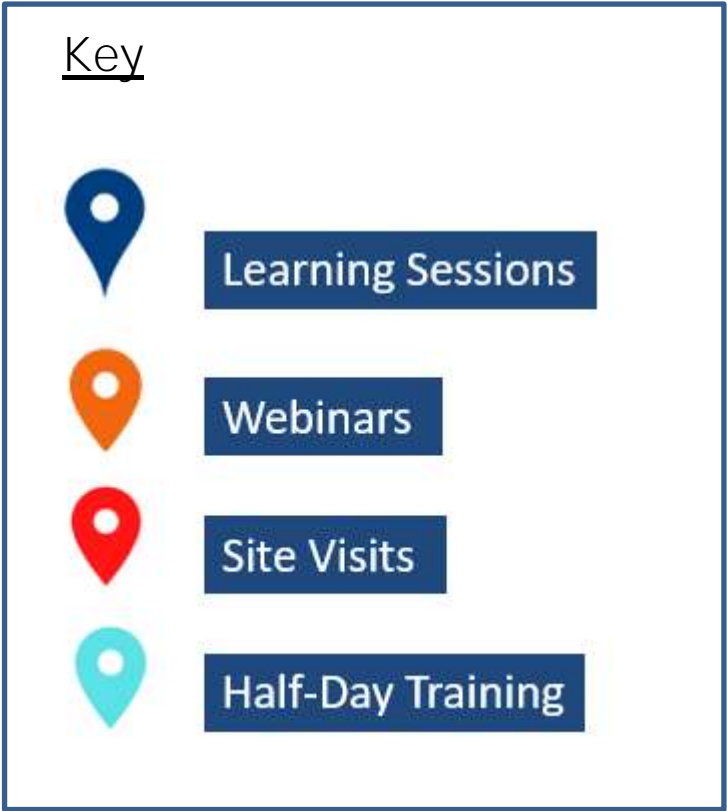
- 16-month program
- **20 health centers**
- Mature MAT programs to expand their existing medication for addiction treatment (MAT) programs with a deepened focus on addressing health inequities in and developing community partnerships

Learning Network

- 15-month program
- Alumni network geared towards the general improvement and sustainability of MAT programs through a less intensive and completely virtual platform



Program Components



Program Timeline

		2023											2024		
		FEB	MAR	APR	MAY	JUNE	JULY	AUG	SEPT	OCT	NOV	DEC	JAN-FEB	MAR-APR	MAY-JUNE
	Webinars	Kick-off Webinar (2/28)	Data Onboarding Webinar (TBD)												
	Learning Sessions & Trainings (In-person/Virtual)														
	Site Visits (Optional)														
	Coaching														
	Evaluation			Baseline Capability Assessment					Mid-Point Capability Assessment						End-Point Capability Assessment
	Data Submission														



What teams...

GET

- Technical assistance and access to experts to help you strengthen and expand your MAT program
- **\$75,000** per site to offset costs associated with MAT program development and expansion
- Access to a peer learning community
- Online Resource Center

What teams...

GIVE

- Commitment from leadership to actively sponsor and champion this program
- Establish a dedicated core MAT team who will actively participate in the program
- Establish a relationship with a community partner to address SUD in your community
- Actively share your experience and tools with your peers in the collaborative





Curriculum & Coaching



ATSH EQUITY COLLABORATIVE

Skillsets

Participants will address and work towards elimination of SUD inequities through centering equity, expanding MAT care, and developing community partnerships through systems practice



Equity

More than a mission statement, equity and racial justice encompasses a set of values and capabilities that individuals, organizations, and communities embody and implement together to eliminate disparities



MAT Care

Improve and increase care for minoritized populations, who are disparately impacted by SUD. MAT care is trauma-informed, whole-person oriented, including potentially co-occurring substance use disorders such as alcohol, tobacco, stimulants, as well as opioids, especially fentanyl

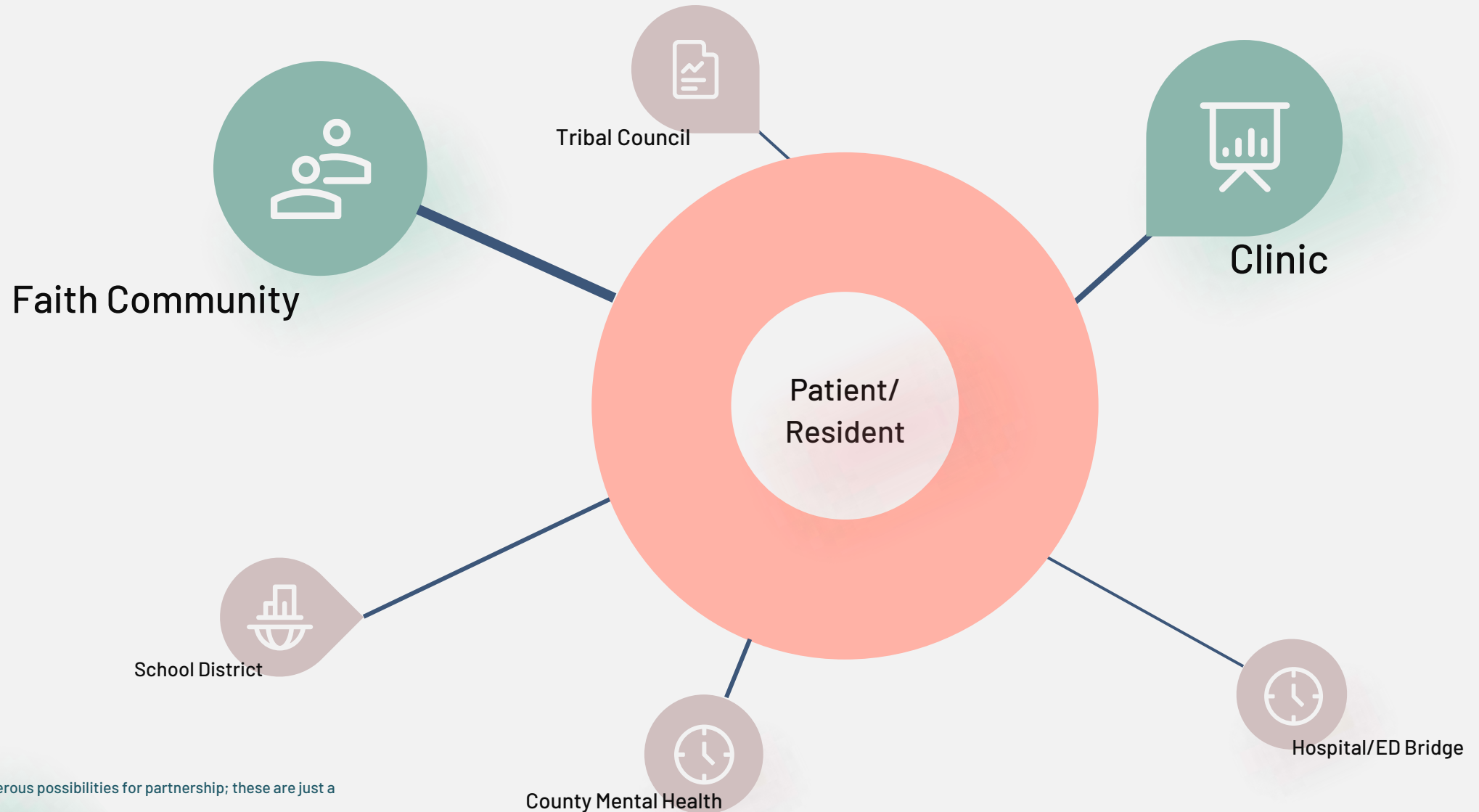


Systems Practice/Community Partnerships

SUD inequities are deeply rooted in historical and structural racism woven throughout our communities, health care system, and institutions. Strong partnerships across your communities are needed to eliminate these disparities.



ATSH PRIORITIZES STRATEGIC PARTNERSHIP(S)



I ATSH Clinical Leads



Brian Hurley, MD

He/His/Him

Addiction Psychiatrist, Medical Director of
Substance Abuse Prevention and Control
LA County Department of Public Health



Eboni Winford, Ph.D., MPH

She/Her/Hers

Director of Research & Health Equity
Cherokee Health Systems



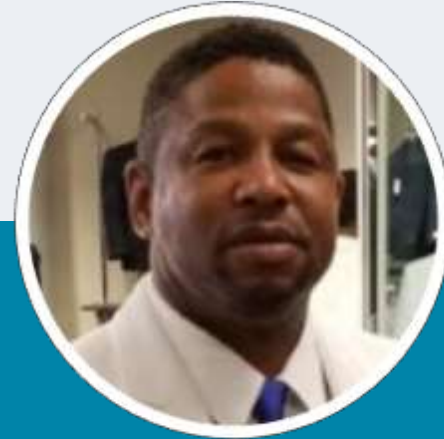
I ATSH MAT Care Coaches



Katie Bell, MSN, RN-BC,
CARN, PHN
She/Her/Hers
Nurse Case Manager
Center for Care Innovations



Ginny Eck
She/Her/Hers
Substance Use Disorder Project
Director
Wesley Health Centers



Dominique McDowell, BA,
RLPS, SUDCII
He/His/Him
Program Manager - HOPE Team
University of California, San
Francisco



Joe Sepulveda, MD
He/His/Him
Chief of Psychiatry & Medical
Director for Substance Use Disorder
Services
Family Health Centers of San Diego



I ATSH Equity Coaches



Kristene Cristobal, MS

She/Her/Hers
Equity, Leadership, and
Improvement Consultant
Cristobal Consulting



Roza Do, MPH, MCP

She/Her/Hers
Health Equity Senior Associate
Health Begins



I ATSH Systems Practice Faculty



Jennifer Berman

She/Her/Hers



Melanie Goodchild

She/Her/Hers

Anishinaabe Systems
& Complexity



Measuring for Implementation Support



Mark McGovern, PhD

Medical Director, Integrated
Behavioral Health
Stanford University School of
Medicine



MEASURING FOR IMPLEMENTATION SUPPORT

All measurement activities
happen at baseline, mid- and
end-points

Program Measures

Disaggregated adoption
and reach measures

IMAT

Integrating Medications for
Addiction Treatment in
Primary Care (IMAT-PC);
processes, approaches and
environment

- Infrastructure
- Clinic Culture & Environment
- Patient Identification & Initiating Care
- Care Delivery & Treatment Response Monitoring
- Care Coordination
- Workforce
- Staff Training & Development
- Health Equity*
- Trauma-Informed Care*



Equity Measures

Capabilities in centering
those most impacted by
inequities, sharing power &
leadership, eliminating
structural barriers to equity

Systems & Partnership Measures

Capabilities in seeing the
system, building relationships,
multiple level strategies,
reflective practice

Team Interviews/ Progress Updates

Conversations with the
evaluation and CCI team to
learn more about your
successes and challenges

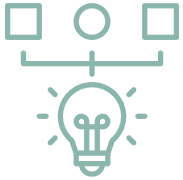
■ Crafting your SMARTIE goal for the RFA



**Ideally, co-developed
with your community
partner**



**Addresses inequities in
SUD treatment
and/outcomes**



Strengthen partnership w/Community Church in Evergreen County that increases access and quality to MAT care for Black and African American residents.

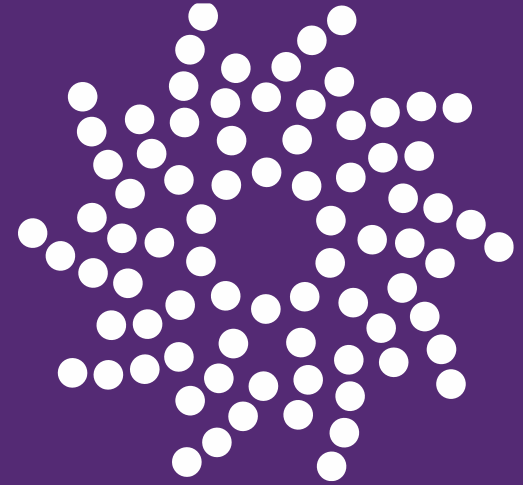
- Increase the number of Black and African American patients receiving MAT treatment at ABC Clinic by 75%, from 50 to 88 patients, by June 2024.
- Increase active MAT prescribers by 50% (from 6 to 9) by June 2024.
- Develop at least one strategic partnership (e.g., ABC County youth program or ED Bridge) with shared goals, data sharing agreements, strategies, and equity-centered approaches for increasing MAT care to Black and African American patients in our community by June 2024.



PAUSE AND REFLECT:

Take 2-minutes to jot down
your questions or curiosities.

Q&A is coming up soon.





Eligibility & Application Process

Who's Eligible?

Applicants should not be 'new' to MAT, in other words they should have an established MAT program that has been in operation for not less than one year, with multiple active prescribers working within a multidisciplinary team (e.g., nurse, SUD counselor, peer support worker, other behavioral health practitioner) that meets regularly to maintain and improve the MAT program.

- ❖ Organizations in California that provide comprehensive primary care services to underserved populations are eligible to apply.
- ❖ Organizations that are non-profit and tax-exempt under 501(c)(3) of the Internal Revenue Service Code or a governmental, tribal, or public entity.



Eligible organizations include California-based:

- Federally Qualified Health Centers (FQHC) and FQHC look-alikes
- Community clinics, rural health clinics, and free clinics
- Ambulatory care clinics owned and operated by county health systems or public hospitals
- Indian Health Service (IHS) clinics



Who is Eligible Continued...



Multiple Sites Accepted:

- CCI will accept applications from multiple clinic sites within the same organization.
- **Up to three clinic sites per organization can apply.**
 - Project team members may overlap, but each site must define the team responsible for its MAT program and their site-specific goals.
 - Each site selected will be eligible for a grant of up to \$75,000





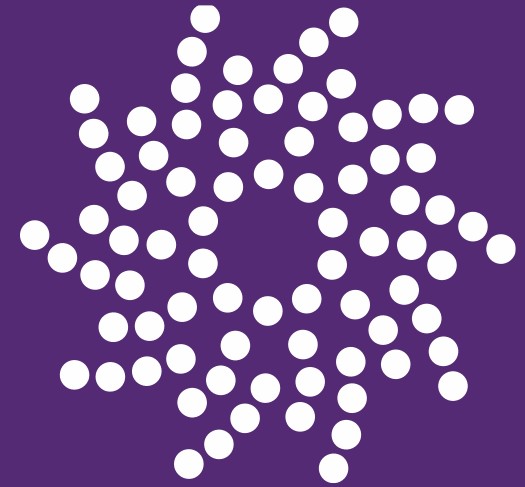
Strong Partnerships

We Value Partnerships

- We encourage applicants who already have or are forming partnerships with key stakeholders in their community
 - (e.g., health department, schools, needle exchange, justice, etc.).
- We welcome applicants who are working towards building **community linkages to propose other entities/organizations within their community with whom they aim to develop strategic partnerships.**



PAUSE AND REFLECT:



What strategies do you use to develop and strengthen your partnerships with other organizations in your community?



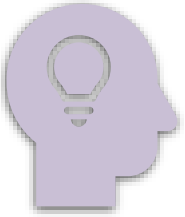
Chat Box Activity

Type Into the Chat Box

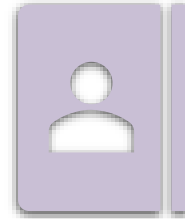
What strategies do you use to develop and strengthen your partnerships with other organizations in your community?



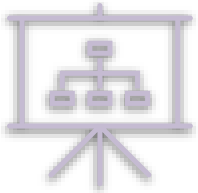
What Makes a Strong Application



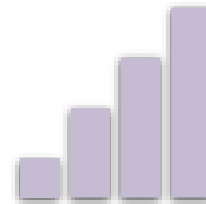
Readiness to actively share approaches and lessons learned with other teams



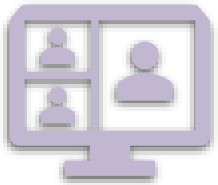
Demonstrate a commitment to equity and racial justice



Organizations with established MAT programs in at least one site and spreading to another site.



Ability to submit quarterly data on the program measure set, disaggregated by race/ethnicity, and to submit a baseline, midpoint, and endpoint capability assessment



Leadership is strongly engaged



Established partnership with the site and community partners- shared goals



How to Apply?

Applications must be submitted online by
December 12, 2022, by 5:00PM PDT

Applications should include the following:

- ❖ Application Submission Form
- ❖ 501(c)3 tax status documentation
- ❖ Narrative response questions
- ❖ Budget proposal, using CCI's budget template
- ❖ Letter of support from leadership:
This letter should be from a senior leader who will be involved in your project and should be no more than 1 page
- ❖ Organization logo image file (300x300px minimum, Png format).



Key Dates



ATSH: Equity Learning Collaborative

Application Deadline
December 12, 2022
By 5pm PDT

Program Starts & Kickoff Webinar
February 28, 2023

NOVEMBER

DECEMBER

JANUARY 2023

FEBRUARY

MAY

JUN 2024

Cohort Announced
February 15, 2023

June 30, 2024
Program Ends

The learning collaborative will run for 16 months, from February 2023 to June 2024





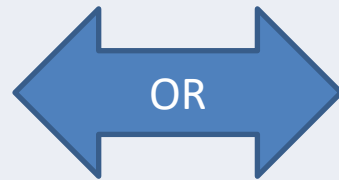
Questions & Feedback

Questions?



Use the Chat

Go ahead, speak up using the zoom chat- ask questions and the team will be sure to provide an answer



Unmute to share

Go ahead, unmute to share your question or curiosity





Open Forum

Feel free to unmute or use the chat to answer these two questions:

What are your biggest challenges with MAT care?

What would support you in meeting those challenges





CCI
CENTER FOR CARE
INNOVATIONS

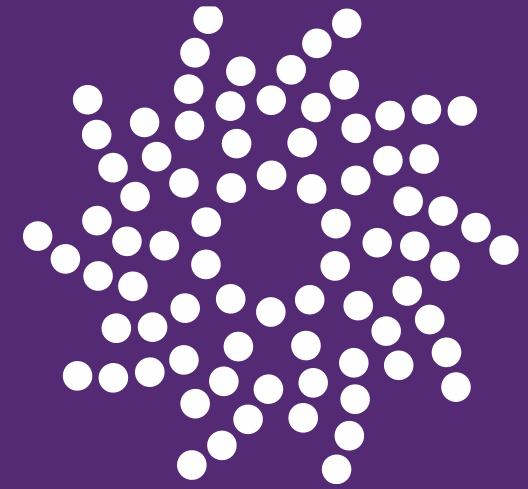


DHCS

How Did We Do?

Please take the next 2 minutes to answer
our virtual event poll.





Closing

I For Questions Contact:



Lydia Zemmali

Program Coordinator

lydia@careinnovations.org





Thank you !



CCI
CENTER FOR CARE
INNOVATIONS