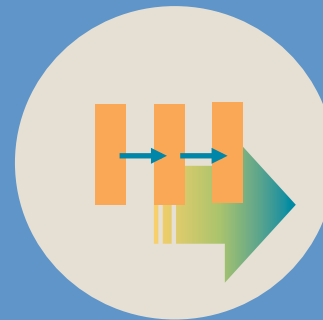


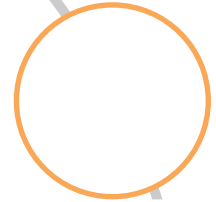
# KP Transformation Accelerator Clinic Assessment

March 22, 2018

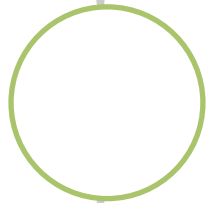
Center for Community Health and Evaluation  
[www.cche.org](http://www.cche.org)



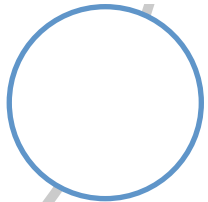
# Goals of assessment



Assess changes to clinic capacity that occur during the course of the program



Use assessment results to inform technical assistance



Promote dialogue at the clinics about internal capacity and potential areas for improvement

# Assessment domains

Supportive  
leadership &  
culture

(e.g., engaged executive &  
clinical leadership)

QI infrastructure

(e.g., culture of quality,  
structure, goals for QI  
efforts)

Data-based  
decision making

(e.g., use of performance  
measures, registry/panel  
level data, use of EHR)

Team-based care

(e.g., roles of staff,  
standing orders, training  
practices)

Access to care

(e.g. enhanced access,  
24/7 access)

Panel/  
population  
management

(e.g., empanelment,  
proactive care, self-  
management support)

# Working session: Complete the assessment

- 20 minutes to begin assessing your clinic's current level/capacity with these building blocks
- We are here for support & to answer questions
- Submit your team's completed assessment by end of day
- **Looking forward:** Assessment will be completed again at the end of the program

# Questions and comments?

Maggie Jones

Associate Director

Center for Community Health and Evaluation

*Part of Kaiser Permanente Washington Health Research Institute*

[jones.margaret@ghc.org](mailto:jones.margaret@ghc.org)

(206) 287-4604

[www.cche.org](http://www.cche.org)