



***Identifying and Addressing SDOH in
Complex Populations***

Initial Observations

Petaluma
HealthCenter

- SDOH Impact Patients' Health
- Addressing SDOH Can Help
- We Can't Help if We Don't Know
 - Helping Takes Time



The Problem

- Community Resource Information Not Widely Available
 - No Standard Screening
- Fear of Overwhelm



The Solution?

Petaluma
HealthCenter

Physical Binder → Virtual Binder



Platforms

Petaluma
HealthCenter

- Healthify
- Purple Binder
- One Degree
- Aunt Bertha



Find food, health, housing
and employment programs
in seconds.

Zip:

Search

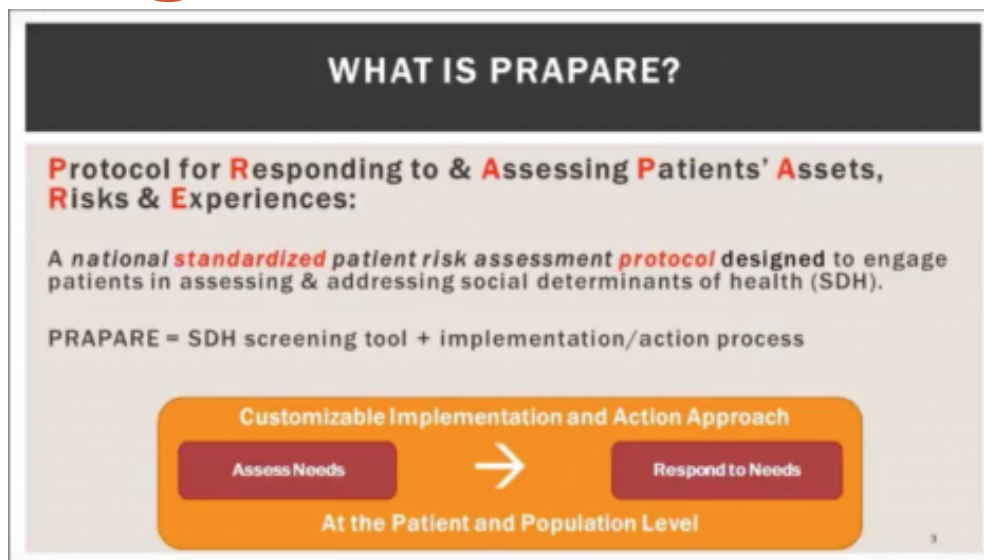
By continuing, you agree to Aunt Bertha's terms & privacy policy.

It's simple. It's free.

With just a zip code (no registration
required) you can find hundreds of
programs in your area and it takes less than
5 seconds.

26,767
PEOPLE USE IT
(and growing daily)

Screening: PRAPARE



Core	
UDS SDH Domains	Non-UDS SDH Domains
1. Race	9. Education
2. Ethnicity	10. Employment
3. Veteran Status	11. Material Security
4. Farmworker Status	12. Social Integration
5. English Proficiency	13. Stress
6. Income	
7. Insurance	
8. Neighborhood	
9. Housing	
Optional	
Non-UDS SDH Domains	
1. Incarceration History	5. Safety
2. Transportation	6. Domestic Violence
3. Refugee Status	
4. Country of Origin	

PRAPARE asks 15 questions to assess 14 core SDH domains.

- 9 questions already asked for UDS reporting
- 5 non-UDS questions informed by MU3

PRAPARE has 6 optional domains.

Screening Strategy

Petaluma
HealthCenter

Care Gaps

Due for PRAPARE

Recommended Intervention: Give Patient PRAPARE Screening Today

Not Web-Enabled

Recommended Intervention: Web Enable Patient Today

Due for Colorectal Cancer Screening

Recommended Intervention: Order Colonoscopy or Fit Kit Today

Due for Mammogram

Recommended Intervention: Order Mammogram

Due for Hepatitis C Screening

Recommended Intervention: Order Hep C Screening Lab Today

Overdue for cervical cancer screening (F24-64 excludes hysterectomy)

Recommended Intervention: Urge Patient to get PAP TODAY

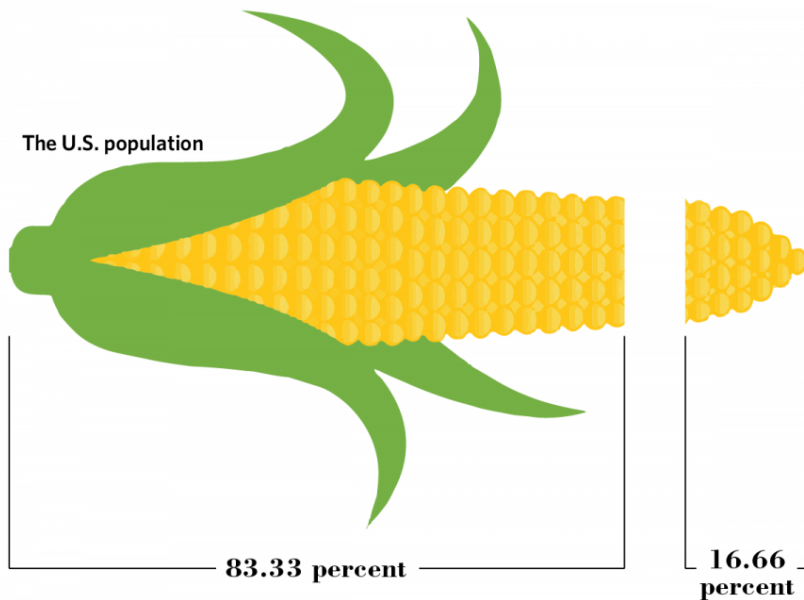
- Part of Clinical Decision Support
- Risk score $>$ or $=$ 3
- Diagnosis of Diabetes or Depression

Using Data to Inform Partnerships

Petaluma
HealthCenter

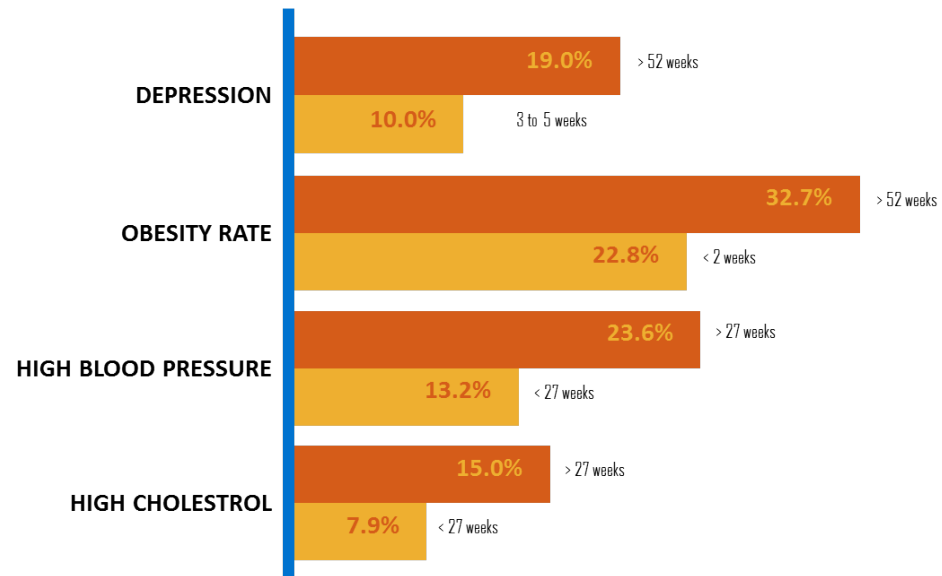
Food insecurity nationally

Nationally, **1 in 6 adults** have inadequate access to enough food.



BERCHAM KAMBER THE DAILY ILLINI
SOURCE U.S. DEPARTMENT OF AGRICULTURE

EFFECTS OF LONG-TERM UNEMPLOYMENT



Food First

Petaluma
HealthCenter

Petaluma Bounty



Redwood Empire Food Bank

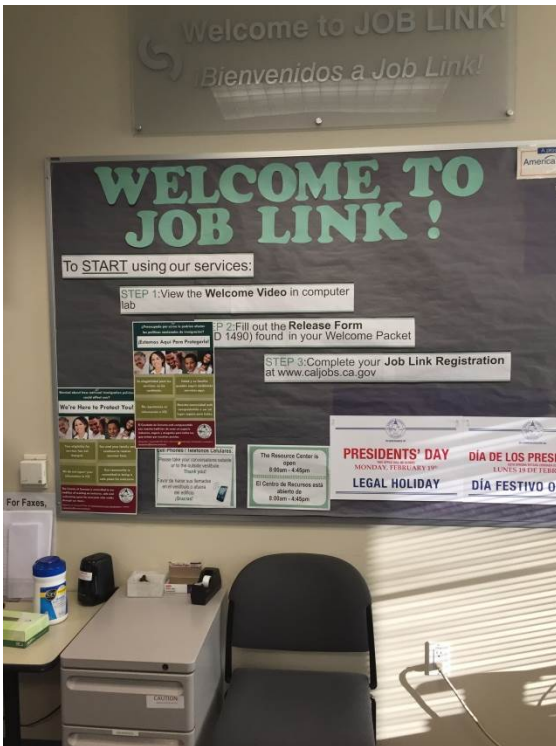


Employment and Skills

Petaluma
HealthCenter

Sonoma County Job Link

Petaluma Adult School



Lessons Learned

Petaluma
HealthCenter

- You don't know until you ask. This goes for screening patients as well as mutually beneficial partnerships.
- Front line staff who are doing the work need to be at the table from the beginning.
- Engaged leadership will help you move this work forward faster. Evaluate priorities before launching.
- Look for opportunities for pilots and seed funding, lots of energy and interest in this field.
- Partnerships take time.
- This is community building work.
 - Get outside of your clinics!





Petaluma HealthCenter

