



GOLDEN VALLEY
HEALTH CENTERS

If BP is 140/90 and above...

Create a “script”-----

“Your BP last time was 150/95 which is not controlled, the goal BP for you is <140/90, today it is 140/90 so I would like to recheck to ensure this is the right blood pressure.”

Document in NextGen and notify the provider in the 30 seconds report.

We **care** for you.



GOLDEN VALLEY
HEALTH CENTERS

When Screening patients for high blood pressure:

- Use a validated automated device to measure BP
- Use a correct cuff size on a bare arm
- Ensure patient is positioned correctly

We **care** for you.



GOLDEN VALLEY
HEALTH CENTERS

Confirmatory Checklist

- **If screening BP is equal or more than 140/90 mm Hg, obtain a confirmatory measurement**
 - Repeat screening tips above
 - Ensure patient has an empty bladder
 - Ensure that patient has rested quietly for at least five (5) minutes
 - Obtain of at least three (3) BP measurements

We **care** for you.



GOLDEN VALLEY
HEALTH CENTERS

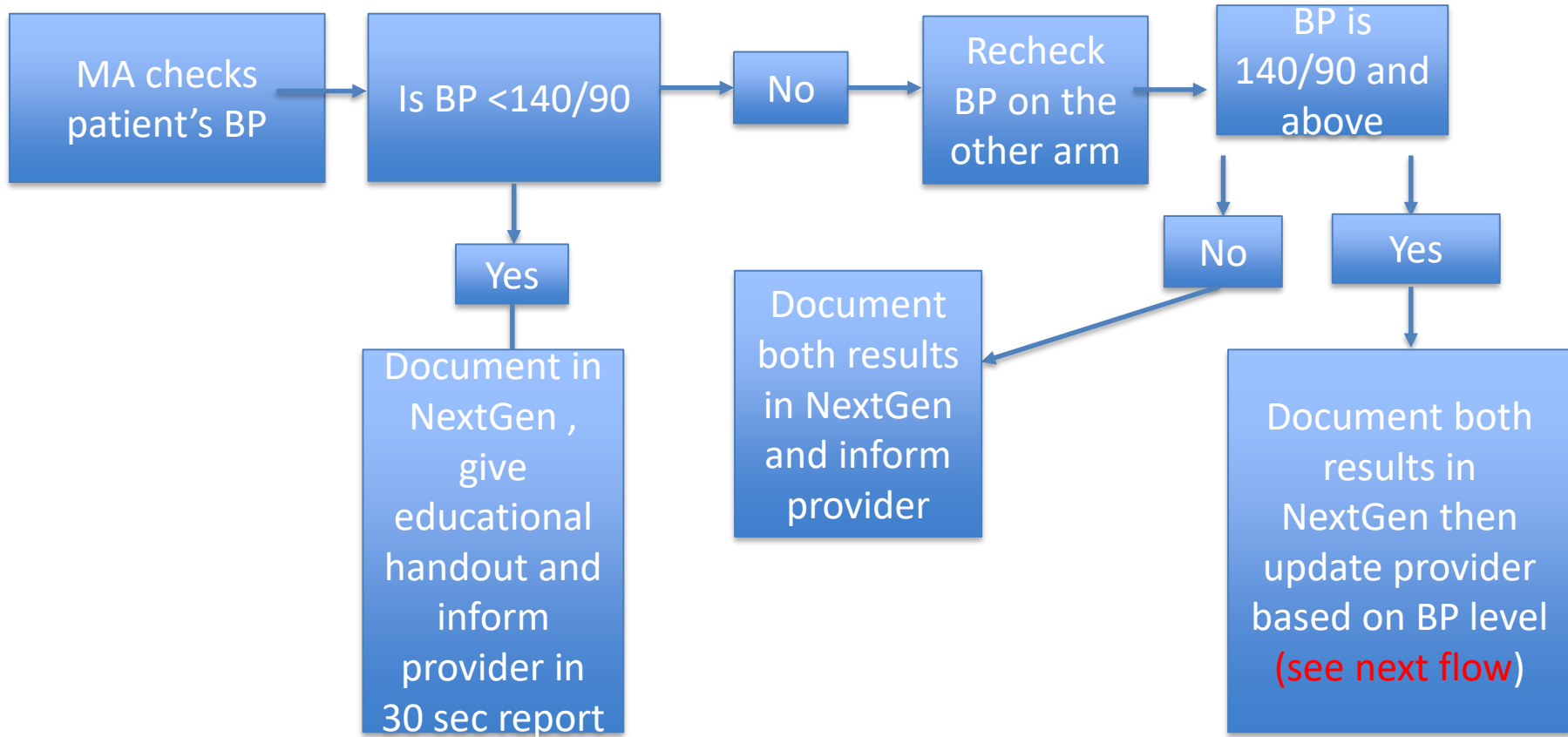
Adherence Questions

- **Ask adherence questions**
 - ✓ How many times in the last week have you taken your medication the way that it is prescribed?
 - ✓ How many pills have you missed in the past week?
 - ✓ Are you having any side effects from the medication?
 - ✓ Do you take your medication(s) everyday?
 - ✓ When was your last dose?
 - ✓ How often do you miss or forget to take meds in a week?

We **care** for you.



MA Workflow





GOLDEN VALLEY
HEALTH CENTERS

BP 140/90
<160/100

Ask adherence
questions, Give
educational
handout

Document &
Inform
Provider in
30 sec report

We **care** for you.



GOLDEN VALLEY
HEALTH CENTERS

BP
160/100
<180/110

Ask adherence questions, Give educational handout , offer Health educator appointment

Document & inform Nurse to evaluate if immediate intervention is needed and to provider or Provider if no nurse on site

We **care** for you.



GOLDEN VALLEY
HEALTH CENTERS

BP
180/110
and above

Ask adherence questions, notify nurse to evaluate if immediate intervention is needed and notify provider

Document and Provide educational handout

We **care** for you.