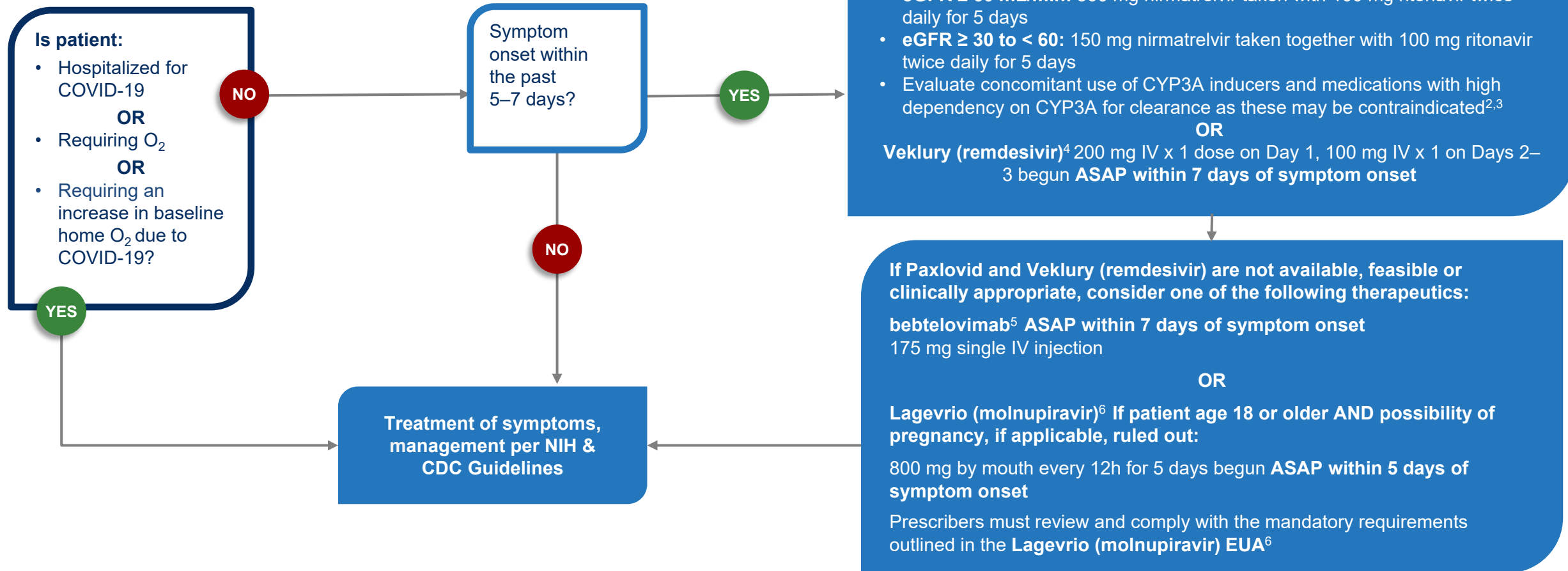


COVID-19 Outpatient Therapeutics

Clinical Decision Aid for Ages 12+ years

Adult or pediatric patient (ages 12 and older weighing at least 40 kg) with mild to moderate COVID-19 and at high risk for progression to severe disease



References:

¹ NIH's COVID-19 Treatment Guidelines Therapeutic Management of Nonhospitalized Adults With COVID-19. <https://www.covid19treatmentguidelines.nih.gov/therapies/statement-on-therapies-for-high-risk-nonhospitalized-patients/>

² Paxlovid EUA. <https://www.fda.gov/media/155050/download>

³ NIH's COVID-19 Treatment Guidelines Panel: Ritonavir-Boosted Nirmatrelvir (Paxlovid). <https://www.covid19treatmentguidelines.nih.gov/therapies/antiviral-therapy/ritonavir-boosted-nirmatrelvir--paxlovid/>

⁴ Veklury (remdesivir) Prescribing Information. https://www.gilead.com/-/media/files/pdfs/medicines/covid-19/veklury/veklury_pi.pdf

⁵ Bebtelovimab EUA. <https://www.fda.gov/media/156152/download>

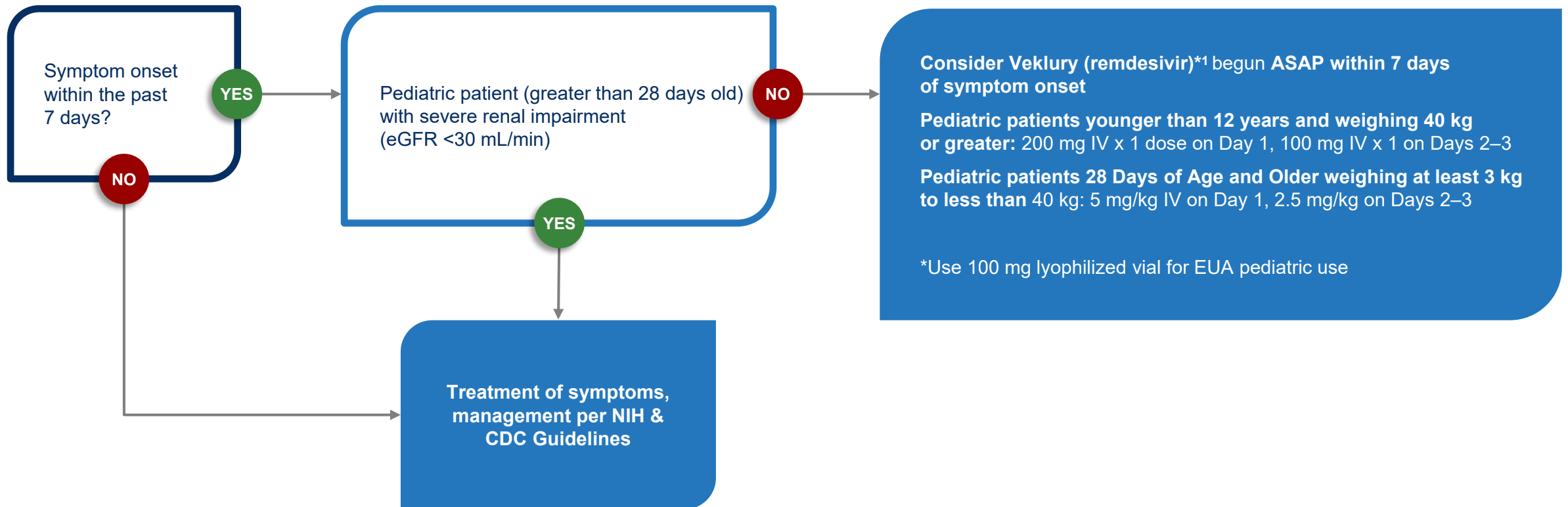
⁶ Lagevrio EUA. <https://www.fda.gov/media/155054/download>



COVID-19 Outpatient Therapeutics

Clinical Decision Aid for Ages 28 days to less than 12 years

Pediatric patient (28 days of age to less than 12 years, weighing at least 3 kg to less than 40 kg) with mild to moderate COVID-19 and at high risk for progression to severe disease



Reference:

¹ Veklury Prescribing Information: https://www.gilead.com/-/media/files/pdfs/medicines/covid-19/veklury/veklury_pi.pdf

Unclassified/ For Public Distribution



ASPR
ADMINISTRATION FOR STRATEGIC
PREPAREDNESS AND RESPONSE