



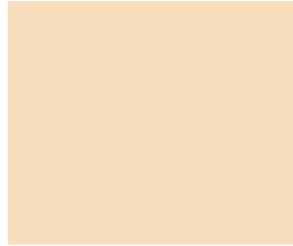
La Clinica de La Raza

Who We Are

- Founded in 1971
- 91,000 patients served in 2019
- 35 service sites in 3 counties (Alameda, Contra Costa, Solano)
- Transitioned to EPIC on April 28, 2020
- 3 sites have Patient-Centered Medical Home (PCMH) Recognition-- Monument, North Vallejo, & Vallejo
- Agency has a Wellness Champion & Social Determinants of Health Committee



Our CALQIC Team



Chika Akera, AMD,
Monument Medical



Sara Johnson, OB-GYN,
Monument Medical



Anastasia Coutinho,
Family Physician,
Monument Medical



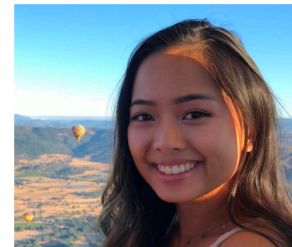
Katia Rahal, Community
Health Educator, Casa CHE
Contra Costa/Solano



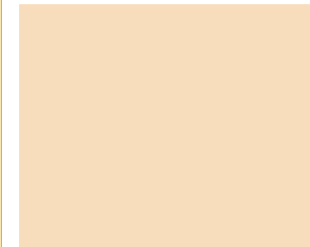
Barbara Botelho,
Pediatrician, Pittsburg
Medical



Sean Williams,
Pediatrician, Oakley
Medical



Kimmy Phan,
Population Health
Program Manager



Liseth Archila-Evangelia,
Clinical Health Educator,
Monument Medical



Current State: ACEs Screening & Response

- *Our current strengths:*

- Diverse, multidisciplinary group; passionate about this work
- Committed to becoming a healing organization through current mental health programs (I.e., Cultura Y Bienestar, Casa del Sol)
- Agency has a robust clinical response to trauma, including Integrated Behavioral Health
- Experience implementing ACEs screening, including amongst our group members
- Focused on staff wellness through our Wellness Program

- *Our biggest challenges:*

- Development of a robust referral process to support collaborations with community partners
- Case management and care coordination related to ACEs

- *Areas of greatest uncertainty:*

- ACEs screening and response during COVID-19



Our Team Has Been Wondering . . .

- How are other organizations deploying ACEs screening in the setting of COVID?
- What are other organizations measuring or otherwise doing/showing (I.e., showing improved patient satisfaction/trust/retention, or other metrics that sway decision-makers) to advance support of trauma-informed care, including financial support of coordination and wrap-around services, within their institution?
- How are other organizations supporting and training staff around this work?
- How are other organizations structuring and coordinating the project of rolling out ACEs screening and implementing trauma-informed care?

