

Welcome! We will get started at 12:03 pm.

**Amplify Healing Connections
Informational Webinar
December 15, 2020**

Welcome!

Amplify Healing Connections

Informational Webinar

December 15, 2020



This webinar is being recorded and will be posted to
careinnovations.org/amplify-2020/
Please use the **chat box** to ask questions.

Everyone is currently muted.
To unmute yourself: **Press *6**
To mute yourself: **Press *7**

We take the time to honor the true history and people of the land we currently reside on. We pay respect to the Native communities of the past and present, who have paved the way in their ongoing fight for justice, sovereignty, and cultural rights.



Agenda

 **Welcome & Introductions**

 **Program Background**

 **Designing for Healing: WEAVE**

 **How to Apply**

 **Key Dates & Timeline**

 **Q & A**

CCI Program Team



Diana Nguyen
Program Manager



Jackie Nuila
Program Manager



Megan O'Brien
Senior Program Manager



Nhi Tran
Program Coordinator



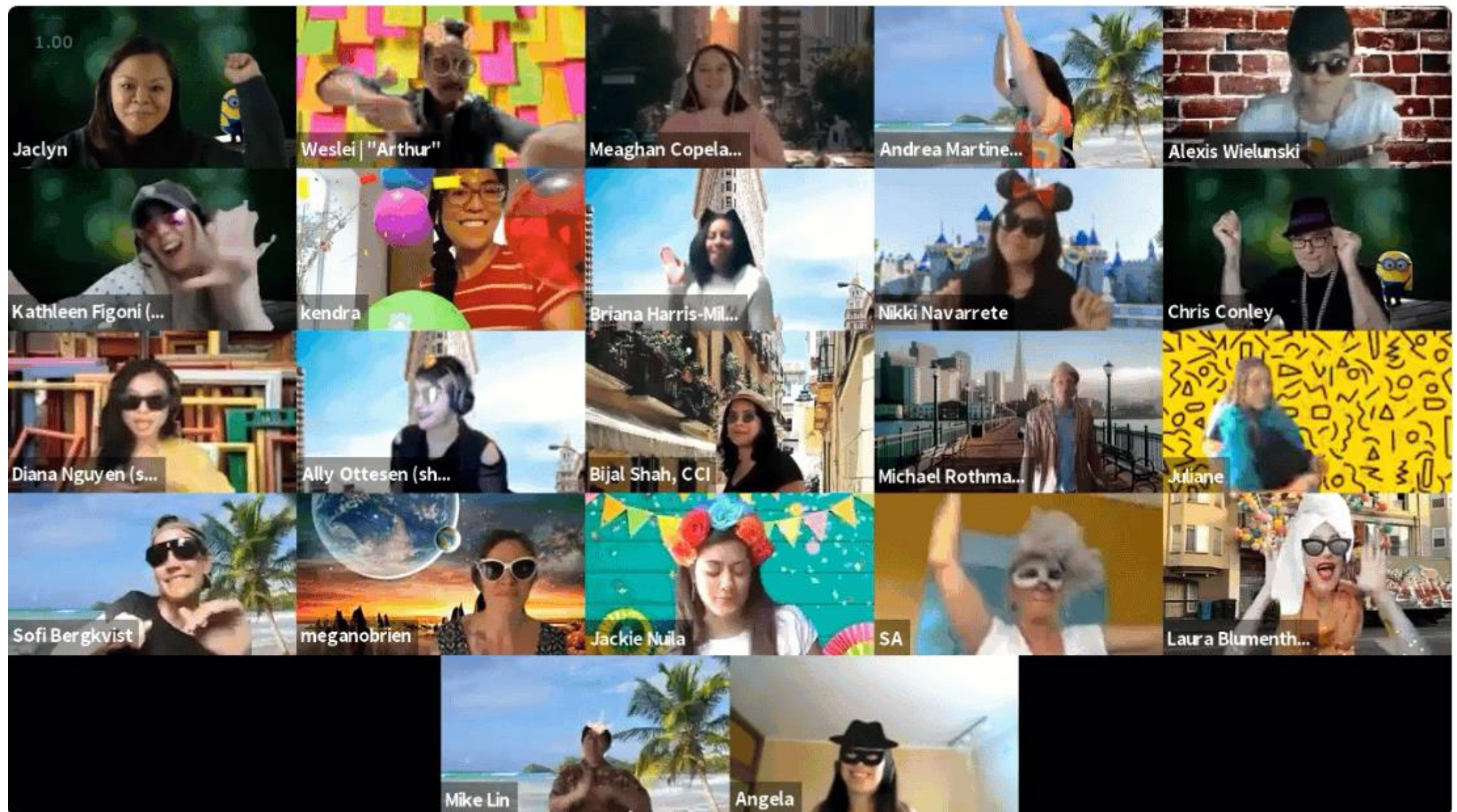
Tammy Fisher
Senior Director





Chat In: Name, organization & one healing practice that has brought you peace.

Introductions



Our Mission

Strengthen the health and well-being of underinvested communities.

We Do This By...

- Building networks
- Enriching people's skills
- Cultivating and sharing best practices
- Inspiring new ways of problem-solving



“

I want to express a deep gratitude to you and to CCI for this program. It was an enriching experience and the relationships we made continue to edify our personal and professional work!

”

Addiction Treatment Starts Here:
Community Partnerships Participant

Program Background



Community Change

**Partnership
Efforts**

**Organizational
Capacity**

**Youth Health
& Well-Being**





What is Amplify Healing Connections?

A 22-month learning collaborative aimed at **strengthening partnerships** that prevent domestic violence for youth (ages 12-18 years old) and their caregivers.



Program Goal

Strengthen six **multi-sector partnerships** that prevent domestic violence and promote health and well-being for young people and their caregivers.



Community Partnerships: Deepen understanding of internal organization, partners and community to uncover strengths and opportunities for collaboration



Youth & Caregiver Power: Center community members with lived experiences and build their power in designing solutions for themselves



Prevention & Promotion of Protective Factors: Test community solutions that can help prevent and mitigate the harm from domestic violence and ACEs

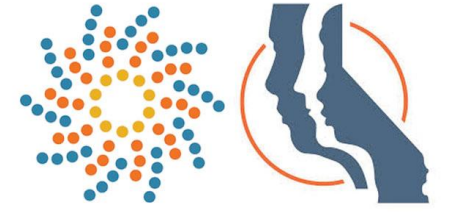


Sustainability: Build systems for sustaining collaborative relationships and efforts

Program Structure



Program Support & Delivery



California Peer Learning Community

Learning Sessions

Peer- and Content-
Expert Led Webinars

\$70,000 Grants

Evaluation Support

Tools & Resources

CCI Academy

Program Support Described

Learning Sessions	Learn from and share best practices with peer participants. Faculty will include peer- and content-experts. *We expect the first two sessions to be virtual and the third to be in-person.
Webinars	Build connections and deepen knowledge on specific topics that emerge as opportunities and challenges during the program.
Grant Funds	Offset the costs of program activities and staff participation.
Evaluation Support	Receive support in identifying measures for impact and success that align with partnership and community goals.
Tools & Resources	Leverage a collection of tools and resources related to ACEs, trauma-informed care, multi-stakeholder partnerships.
CCI Academy	Exchange ideas and tools through a virtual forum for participants.

Example of Technical Assistance Topics

Understand Adverse Childhood Experiences, their impact on physical and mental health, and new thinking on protective factors

Apply systems mapping tools to understand relationships and power structures

Evidence-based interventions to support youth & their caregivers in healing from trauma

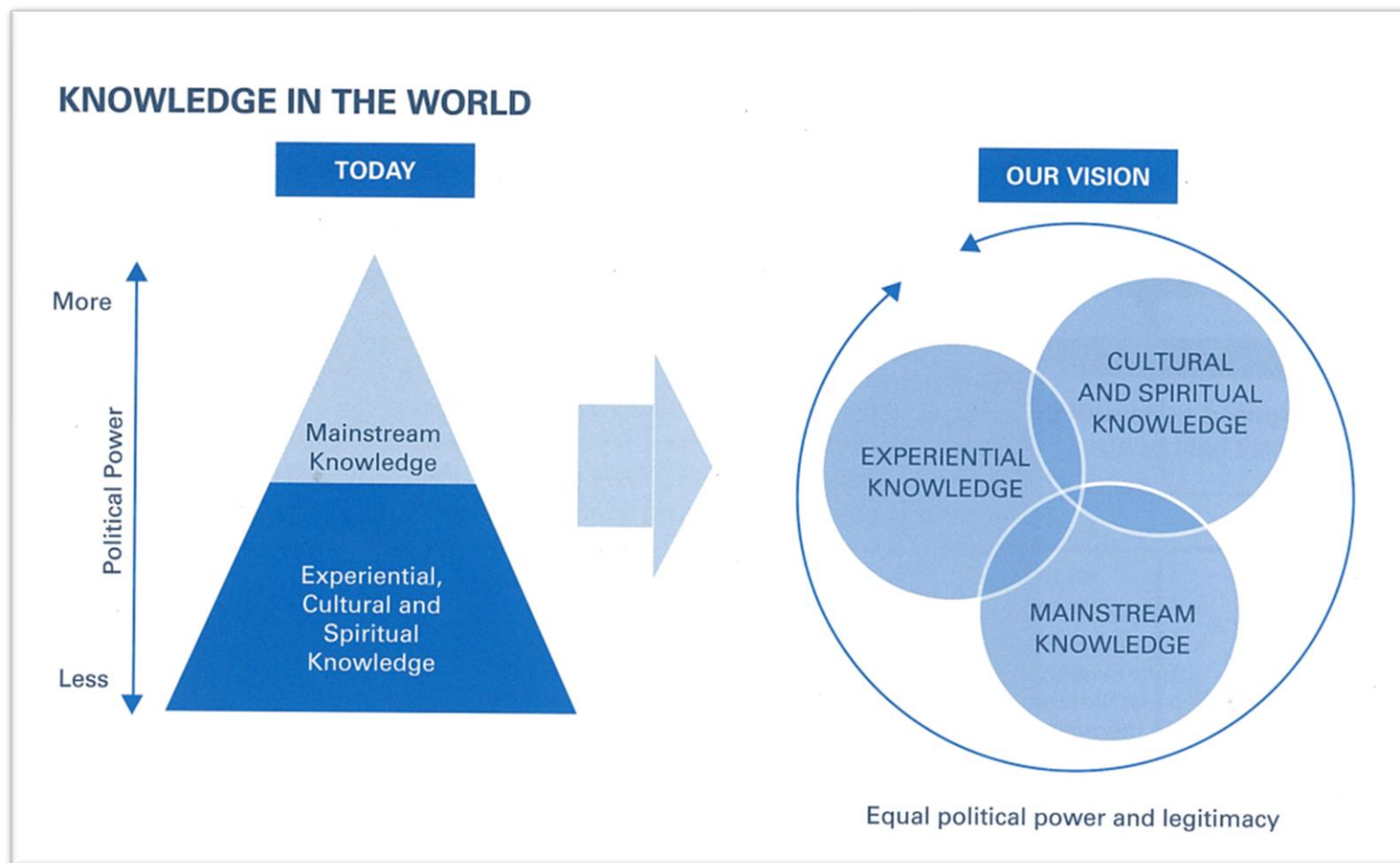


Chat In: What technical assistance topics would like to see in this program?

Evaluation & Impact Support



Roza Do
Program Evaluation
Consultant

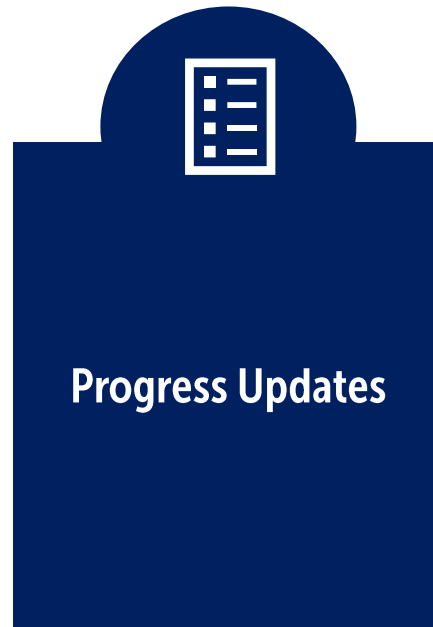


Research Justice Framework, DataCenter (datacenter.org)

Evaluation Activities



At the beginning
of program



Quarterly



At the beginning,
midpoint, and end
of the program



After each
learning
session

Participant Expectations

Continuity and Dedicated Team

- 4-10 core team members
- 1-3 individuals per organizational partner, with at least one person providing direct services
- Includes at least one program lead and direct service experience

Participation in Program Activities

- Core Team: Full engagement in program activities and completion of deliverables and session pre-work
- Senior Leaders Support: Attend the March 11th Kickoff Webinar & an end-of-program webinar

Feedback & Contribute to Broader Learning

- Regularly share about your work, learnings, successes & challenges
- Provide feedback about the program for improvement

What Makes Amplify Unique?



Focus on Youth
Ages 12-18

Blended Approach

Advance Efforts
Through Multi-
Sector Partnership

Peer Learning
Community

“

Collaboration is an important human-centered design concept [...] that helped guide our thinking as we developed the partnership with parents. We realized we didn't know how parents were thinking, what's working for them and what isn't. We wanted to learn from them, to step back and give them a voice and a space where they could express that voice.

”

East Oakland Youth Development Center
Catalyst Alumni

Designing for Healing: WEAVE

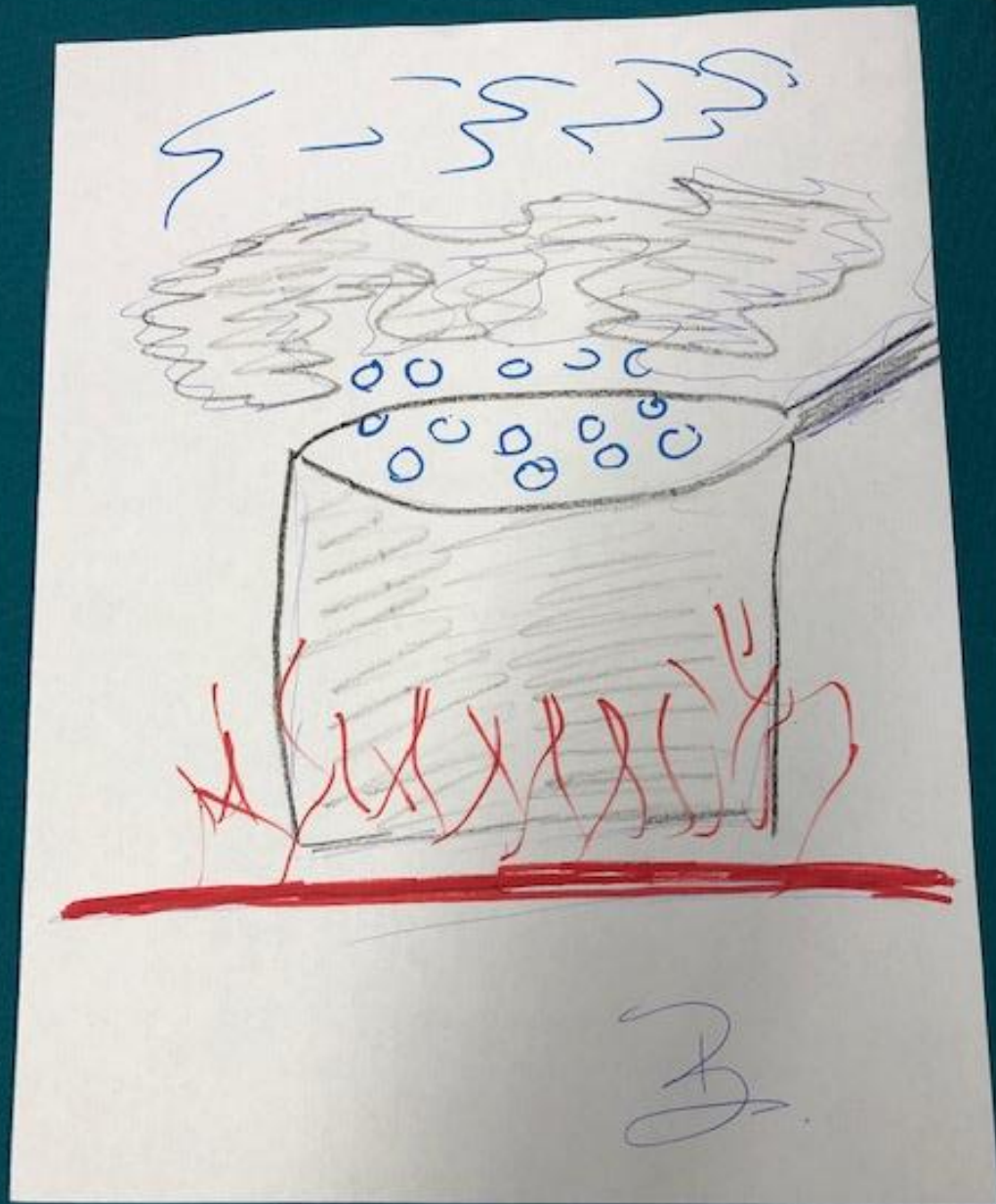


"How might we validate and affirm Black female-identified clients during their stay at our safehouse?"



Timiza Wash

Anti-Trafficking Manager
WEAVE



From the Boiling Pot to "The Maroon Space"

Maroon Space: A specific
space for Black women to
come together and heal

adrienne maree brown



How to Apply

Who's Eligible?

California non-profit organizations that are actively participating in and willing to receive grant funds on behalf of an eligible California-based, multi-sector partnership.

Eligible partnerships include at least one community-based organization and one health care provider organization that serve youth ages 12-18 years old.

Examples of partnerships could include:

Collaboratives

Coalitions

Task forces

Work groups

Informal partnerships that:

- Have a shared understanding of what could be worked on together;
- Have an existing relationship between organizations; and
- Engage in regular communication.



How to Apply

Applicant organizations must submit the following materials:

1. Application Form
2. Application Narrative
3. Budget Template
4. Tax Status Documentation

**All materials must be received
by 5:00PM PST on
January 20, 2021**

What makes a strong application?



Openness to addressing problems in a way that is collaborative, humble, inclusive, iterative, and creative.



Commitment to working with stakeholders across internal and external silos and positional hierarchy.



Grounded in the experiences of young people, their caregivers, and community members and eager to work alongside these individuals to identify opportunity areas and co-design solutions.



Willingness to openly share and learn with other teams



Demonstrated commitment to advance and sustain the work of your partnership.



Key Dates & Timelines

Important Dates & Timelines

Application
Period

November 30,
2020 – January
20, 2021

Application
Deadline

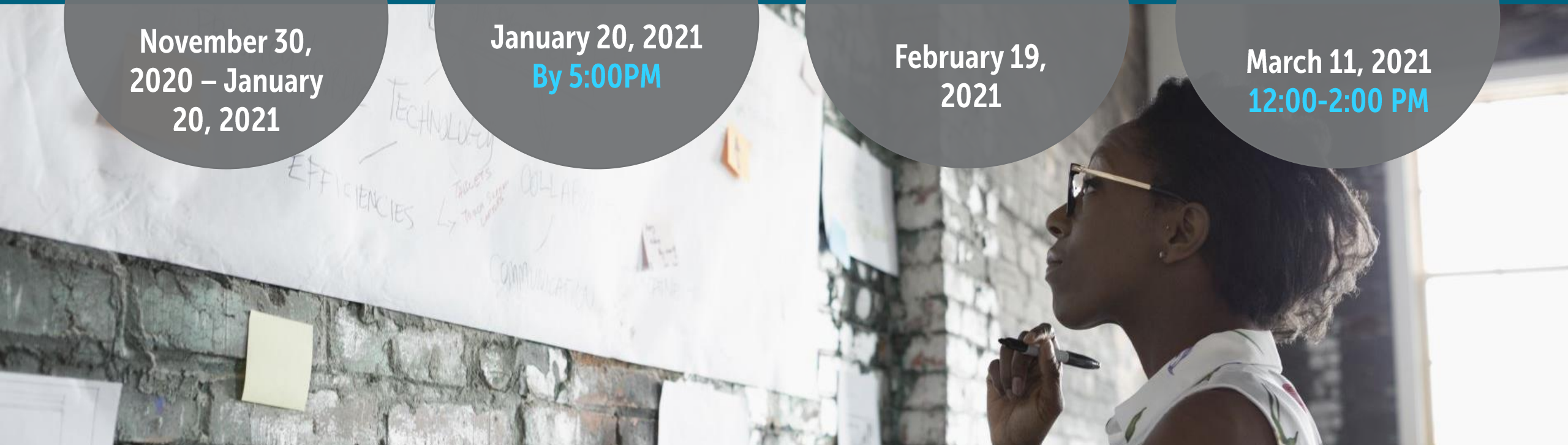
January 20, 2021
By 5:00PM

Cohort
Announced

February 19,
2021

Kick Off Webinar
& Mixer

March 11, 2021
12:00-2:00 PM



Coffee Chats with the CCI Team!

Interested in learning more about the program? Have questions about the application process?

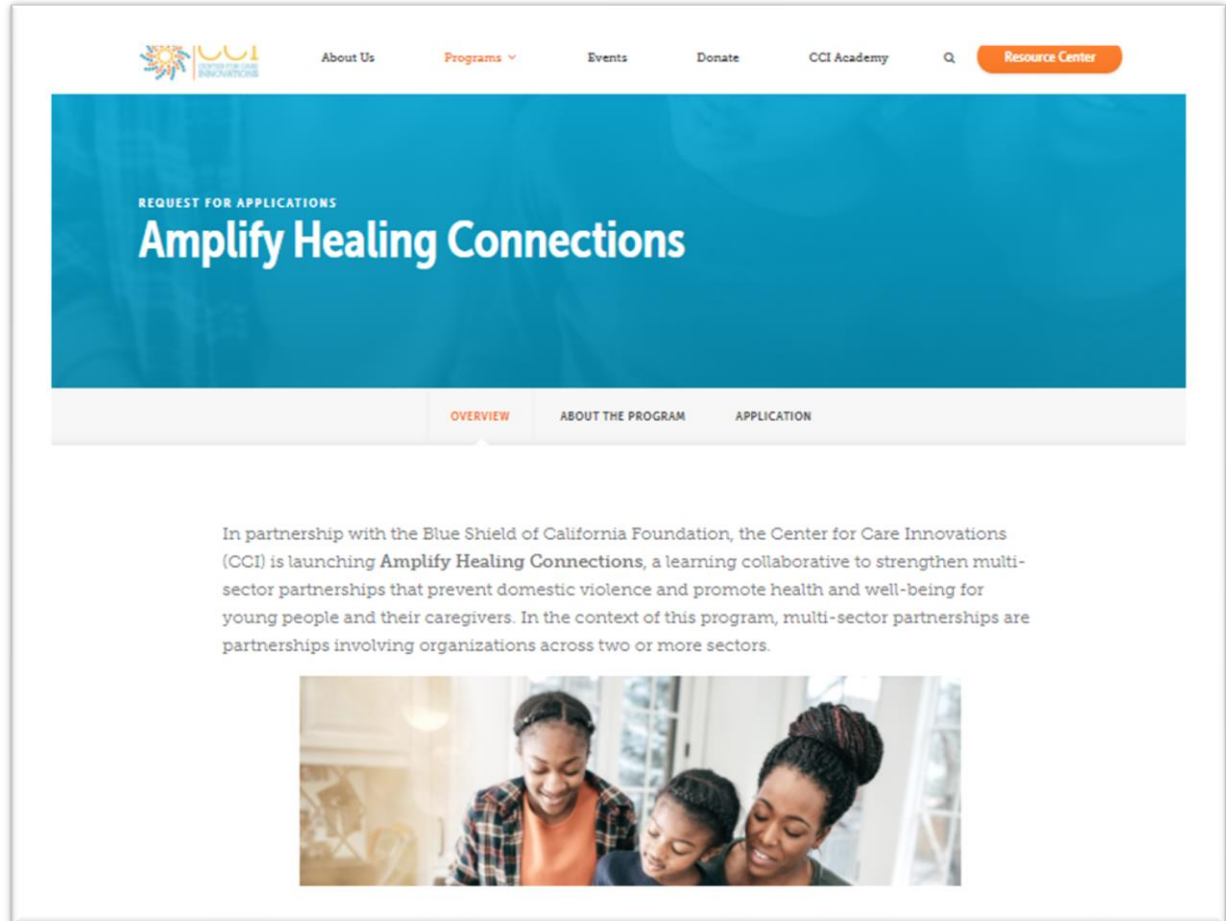
[Sign up for a 15-minute coffee chat.](#)



Program Page

All this information & more can be found here:

www.careinnovations.org/amplify-2020/



KNOWLEDGE SHARE

Two Paths on the Roadmap for Partnership Success

DEC 10, 2020 • Focus Area: Population Health

Written by: Center for Care Innovations



Over the last year, CCI allies helped us explore an important question: Can

Learn more about
EOYDC and LAC+USC
Medical Center's
partnership efforts

Questions & Answers



Chat In: What excites you about this program?

Thank you!

For questions contact:

Diana Nguyen
Program Manager
Center for Care Innovations
diana@careinnovations.org

Nhi Tran
Program Coordinator
Center for Care Innovations
nhi@careinnovations.org