

Addiction Treatment Starts Here: Behavioral Health



March 15, 2019
Informational Webinar

Webinar Reminders

1. Everyone is muted.

- Press *7 to unmute and *6 to re-mute yourself.

2. Remember to chat in questions!

3. Webinar is being recorded and will be sent out via email.

Agenda

1. *Overview of Addiction Treatment Starts Here: Behavioral Health*
2. Why This and Why Now?
3. Program Overview
4. Eligibility & Program Requirements
5. Questions

ATSH: Behavioral Health **Introductions**



Addiction Treatment Starts Here: Program Team

Primary Care + Behavioral Health Collaboratives



Tammy Fisher

Senior Director

tammy@careinnovations.org



Sandy Newman

Principal, LSN Health Strategy
sandy@lsnhealthstrategy.com



Brian Hurley, MD

Director of Addiction Medicine,
L.A. County Dept. of Health
Services



Jennifer Wright

Senior Program Manager
jennifer@careinnovations.org



Shelly Virva

ATSH: BH Advisor + Coach
svirva@camdenhealth.org



Meaghan Copeland

Program Consultant
meaghan@careinnovations.org



Brianna Harris-Mills

Program Coordinator
brianna@careinnovations.org



Diana Nguyen

Program Coordinator
diana@careinnovations.org

Community Partnerships

About The Center for Care Innovations (CCI)

At the Center for Care Innovations we ...

So that our participants ...



Inspire innovation mindsets

Boost their energy & confidence to work differently



Cultivate & share best practices

Embrace solutions that work



Build networks

Collaborate & learn from peers, experts & coaches



Enrich skills

Accelerate the pace of change



Who then transform their organizations by ...

Creating a culture of innovation

Improving systems of care and health

Cultivating the workforce, turning doers into leaders

Listening & engaging people in their community

Adapting to the ever-changing health care environment

Strengthening the health and health care of underserved communities

Based on Lessons Learned in Supporting Health Centers

- CCI previously ran a 18-month program (Treating Addiction in Primary Care, or TAPC) from Sept 2016 – Feb 2018
- 25 FHQCs participated
- Participants **nearly doubled** the number of providers prescribing MAT and **nearly tripled** the number of patients receiving MAT
- Improvements in reducing stigma, defining clear roles and responsibilities for *sharing the care*, developing and standardizing policies/procedures to operationalize MAT programs

*"Providers perceive those with substance use disorders as 'difficult patients.' This is what drives the stigma. **What's remarkable is that once providers got their feet wet, they realized they had a total misconception of these patients.** They are actually rewarding and not difficult. In fact, this work increases provider job satisfaction. **Quite frankly, it is one of the easiest patient populations.** It went from a 'OMG – we're going to open our doors to heroin addicts' to being very grateful."*

ATSH: Behavioral Health
Why This and Why Now?



We Are



Addiction Treatment Starts Here

We're joining California efforts to combat the state's opioid crisis

CLINICAL TRANSFORMATION



PRIMARY CARE

Primary Care Health Centers



BEHAVIORAL HEALTH

Specialty Mental Health and Substance Use Disorder Treatment Providers



COMMUNITY PARTNERSHIPS

Community Opioid Coalitions

MULTI-SECTOR COLLABORATION

Goal

Increase access to **medications for addiction treatment (MAT)** – the use of FDA-approved medications in combination with counseling and behavioral therapies – for opioid use disorder.

We Help You

Boost your energy and confidence to work differently

Embrace solutions that work through virtual and in-person learning

Collaborate with your peers, experts, and coaches

Accelerate the pace of change

Build community



MAT in Behavioral Health

- More than one-third of adults with a serious mental illness have a co-occurring substance use disorder.¹
- Despite MAT being a relatively new approach for most mental health and SUD clinics, both settings are well-positioned to care for clients with OUD
 - Existing psychosocial infrastructure – or linkages to community-based services – will facilitate meeting client’s multi-faceted needs
 - Buprenorphine is a Medi-Cal benefit available to all beneficiaries who demonstrate medical necessity for the use of the medication.
- California’s Hub & Spoke infrastructure can facilitate caring for clients with more complex needs
- Increasing where and how clients can access MAT is an important component to addressing the opioid crisis and also to using a whole-person orientation

Source: Hold, W. (2018, March). *Mental Health in California: For Too Many, Care Not There*. Oakland, CA: California Health Care Foundation.



MAT in Behavioral Health *cont.*

- For some, MAT represents a shift in current approach to care:
 - Concerns around the use of medications for addiction treatment (e.g., trading one addiction for another)
 - Using both medications and counseling/behavioral therapy to manage OUD
 - Different approaches to screening/client identification
 - Team-based care and enhanced care coordination
- A range of activities can support clinics and staff to make this shift



Key Areas to Support MH and SUD

- **MAT Program Development and Operations:** Understanding the neuroscience of addiction, learning about the medications for treatment of OUD, models for design and implementation, managing pain and pain behaviors, etc.
- **Implementing MAT Programs:** Building a case for change in your site, engaging clinicians and staff, maximizing payment and addressing sustainability.
- **Working with Clients:** Strategies for client populations with varying treatment readiness, identifying the behavioral support as part of your MAT program, higher level of co-occurring disorder care for clients with OUD; MAT for clients without strong psychosocial stability, client retention in care.
- **Community MAT Ecosystems:** Establishing/optimizing MAT referral relationships, workflow options for MAT in integrated behavioral health settings and dual diagnosis clinics, building partnerships with community providers, matching clients with resources.



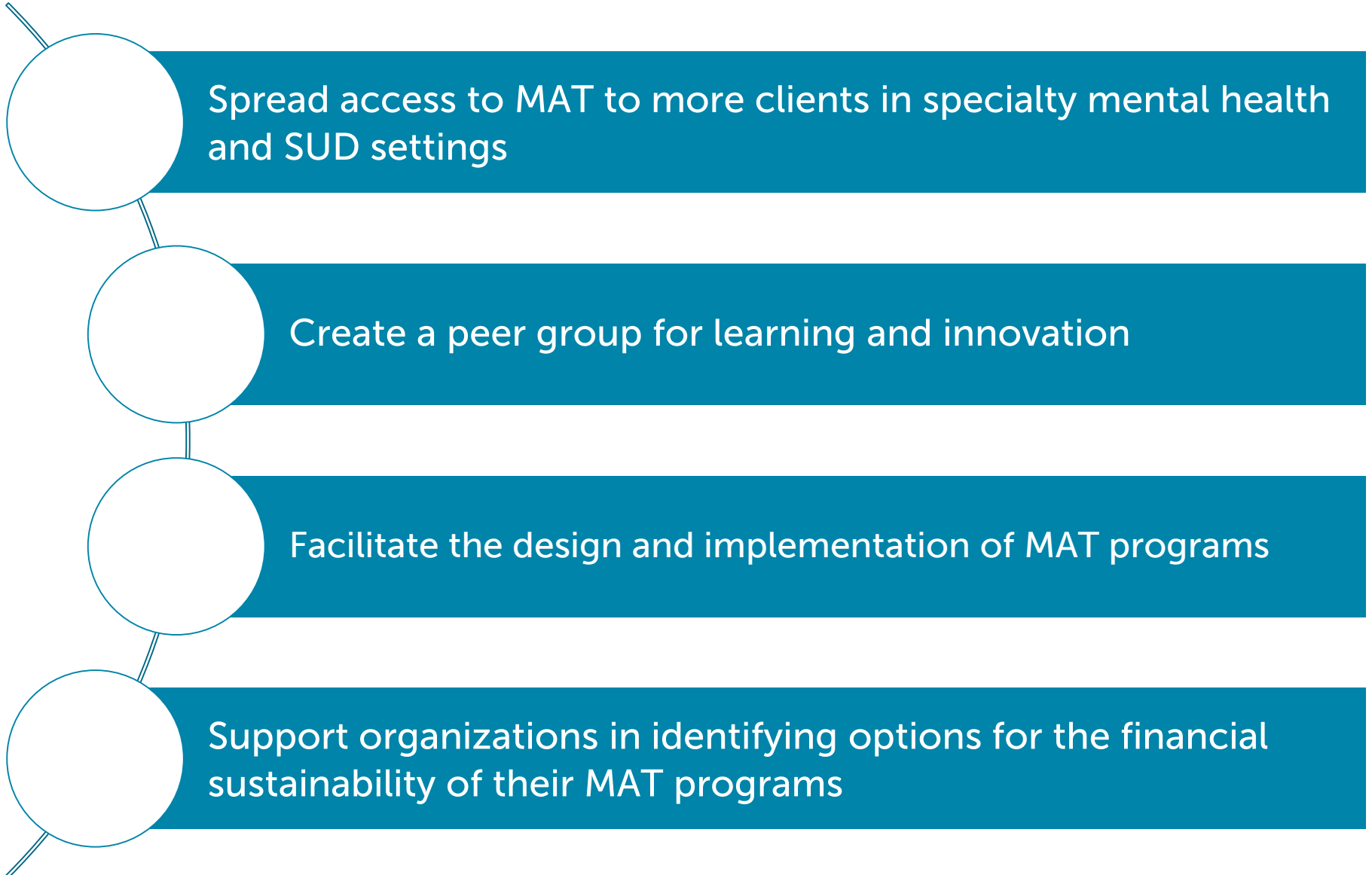
ATSH: Behavioral Health Program Overview



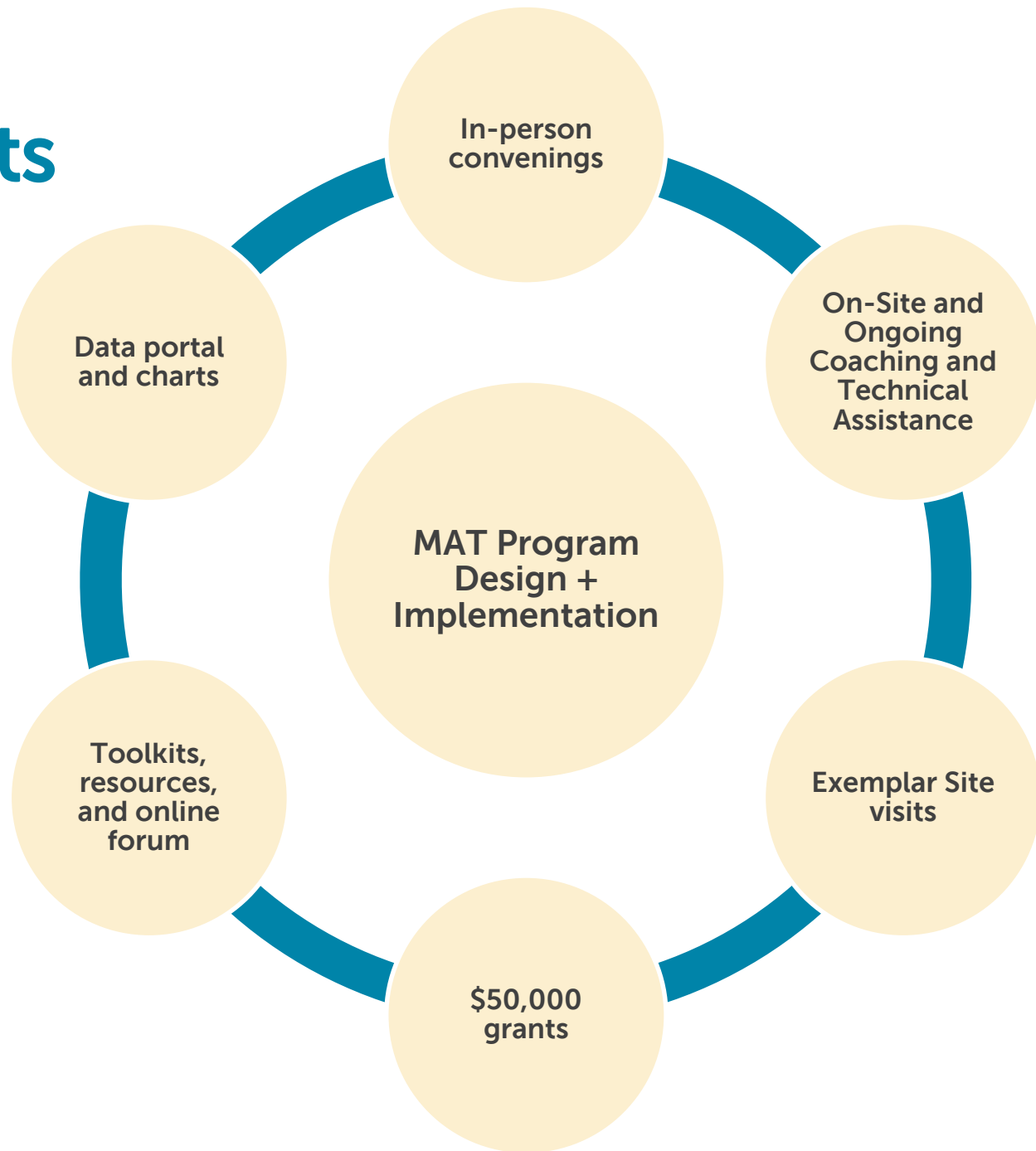
ATSH: Behavioral Health Program Goal

Increase access to MAT in behavioral health care settings by working with up to 10 specialty mental health and substance use disorder settings to design and implement medications for addiction treatment programs

Key Objectives



Program Components



Program Components Described

3 In-Person Convenings	Enable peer sharing and best practice exchange. Faculty will include national experts and peer experts from California and nationally. Each convening will last 1.5 days.
On-Site and On-Going Coaching	Your clinic coach will conduct an in-person visit to your clinic to learn more about your team and current capabilities. Continue working with your expert coach with biweekly technical assistance calls.
Exemplar Site Visits	Provide opportunities to visit an exemplar and a peer health center to see MAT programs in action.
Webinars	Foster networking and deeper knowledge transfer on specific topics that emerge as challenges and priorities from the Learning Collaborative.
Online Resource Center + Discussion Forum	Provide a repository of tools and resources and an online forum to post questions and share resources across peers.
Data Portal + Charts	Report on the project's 3 measures and download run charts to track your progress over time.
\$50,000 Grants	Funding can be used to support attendance at learning sessions, offset staff salaries, program development costs, etc.

ATSH: Behavioral Health
**Eligibility Criteria + Participation
Requirements**



Eligibility Criteria

Your clinic must offer either Medi-Cal specialty mental health services (or other services funded through the Mental Health Services Act) and/or Medi-Cal specialty SUD services (through Drug Medi-Cal), or the equivalent, to underserved populations. Organizations must be non-profit and tax-exempt under 501(c)(3) of the Internal Revenue Service Code (IRC) or a governmental, tribal, or public entity.

Eligible to Apply

- Clinics that provide specialty mental health services, including: outpatient treatment, Full Service Partnerships, Field Capable Services, Intensive Outpatient Treatment, and/or Partial Hospital Programs.
- Clinics that provide alcohol and drug treatment services (e.g., ASAM 1.0 – ASAM 2.5), including outpatient, intensive outpatient treatment, and/or partial hospital programs.
- Opioid Treatment Programs (also known as Narcotic Treatment Programs).

Not Eligible to Apply

- IMD facilities, group homes, any other variants of residential treatment facilities or inpatient mental health facilities
- Recovery bridge housing facilities, residential treatment programs, and inpatient withdrawal management programs

Participation Requirements



Engaged
Leadership

Reporting
Data on
Measures

Peer Sharing

Continuity
&
Dedicated
Team

Active
Participation

Willingness
to Experiment

The Give & The Get

Give	Get
<ul style="list-style-type: none">▪ Commitment to start, improve and/or expand MAT in your site▪ Establish a core team, with a minimum of an x-waivered clinician, project manager, and senior leader<ul style="list-style-type: none">- Core team attends all in-person learning sessions- Core team meets regularly▪ Share your experiences and tools with others▪ Submit data on small measure set (quarterly)	<ul style="list-style-type: none">▪ Access to technical assistance and experts to help you design your program▪ Participate in a learning community that optimizes peer sharing▪ Coaching▪ Site visits to learn from peers▪ \$50,000 per site to offset travel expenses to in-person sessions▪ Online resource center



How to Apply

1. Visit CCI Application Website:
<https://www.careinnovations.org/addiction-behavioral-health-2019/>

2. Complete:

- Application (background on your organization)
- Narrative responses
- Budget
- Letter of Support
- IRS letter

3. Upload your completed application by April 5, 2019

KEY DATES

- Informational Webinar: TODAY!
- Application Deadline: April 5, 2019
- Cohort Announced & Program Start: May 15, 2019
- Kick-Off Webinar: May 30, 2019
- In-Person Learning Session 1: July 10, 2019 – July 11, 2019
- In-Person Learning Session 2: September 18, 2019 – September 19, 2019
- In-Person Learning Session 3: March 18, 2020 – March 19, 2020
- Program End: July 31, 2020

QUESTIONS??



ATSH: Behavioral Health
Questions + Resources



Resources

- Six-minute video to learn more about how Marin City Health and Wellness Center implemented MAT and its impact on patients' lives:
<https://www.careinnovations.org/resources/treating-addiction-in-primary-care-marin-city-health-and-wellness/>
- Treating Addiction in the Primary Care Safety Net: Implementation and Lessons Learned:
<https://www.careinnovations.org/resources/treating-addiction-in-the-primary-care-safety-net-implementation-and-lessons-learned/>
- Application Overview, RFA, and Application Form:
<https://www.careinnovations.org/addiction-behavioral-health-2019/>



Thank you!

For questions contact:

Tammy Fisher
Senior Director
Center for Care Innovations
tammy@careinnovations.org

Sandy Newman
Principal
LSN Health Strategy
sandy@lsnhealthstrategy.com