



Blue Shield of California Foundation is an Independent Licensee of the Blue Shield Association

ROOTS Program

Informational Webinar
May 30, 2017

Program Staff



Megan O'Brien,
Value-Based Care Program Manager,
Center for Care Innovations
mobrien@careinnovations.org



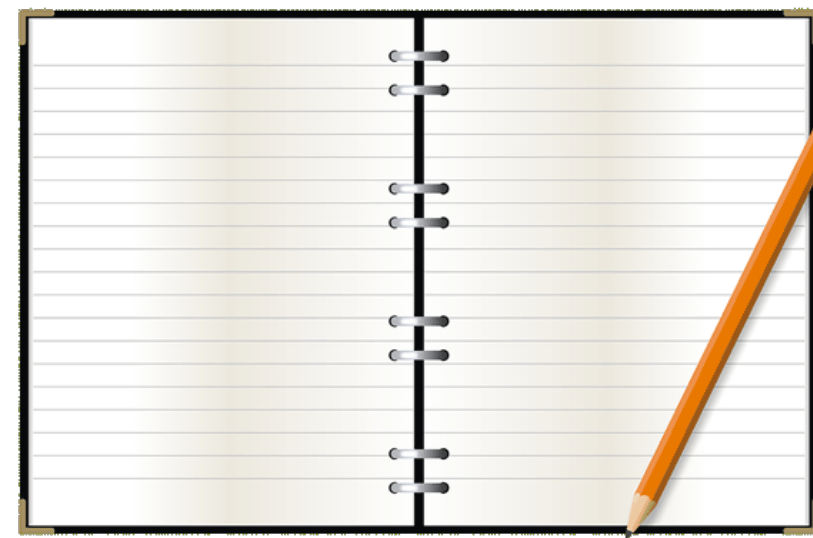
Veenu Aulakh,
Executive Director,
Center for Care Innovations
veenu@careinnovations.org



Diana Nguyen,
Program Coordinator
Center for Care Innovations
diana@careinnovations.org

Agenda

1. Program Introduction and Background
2. Program Description
3. Grantee Support
4. Eligibility & Requirements
5. Application Process
 - Timeline and Important Dates
6. Questions & Answers



Webinar Reminders

1. Everyone is muted.

- Press *7 to **unmute** and *6 to **mute** yourself.

2. Remember to chat in questions!

3. Webinar is being recorded and will be posted and sent out via email



What We Do

Design
Programs

Convene
People

Work with
Experts

Re-
Granting

Innovation

Capacity + Skill
Building

Data Analytics

Population
Health

Technology

Value Based
Care

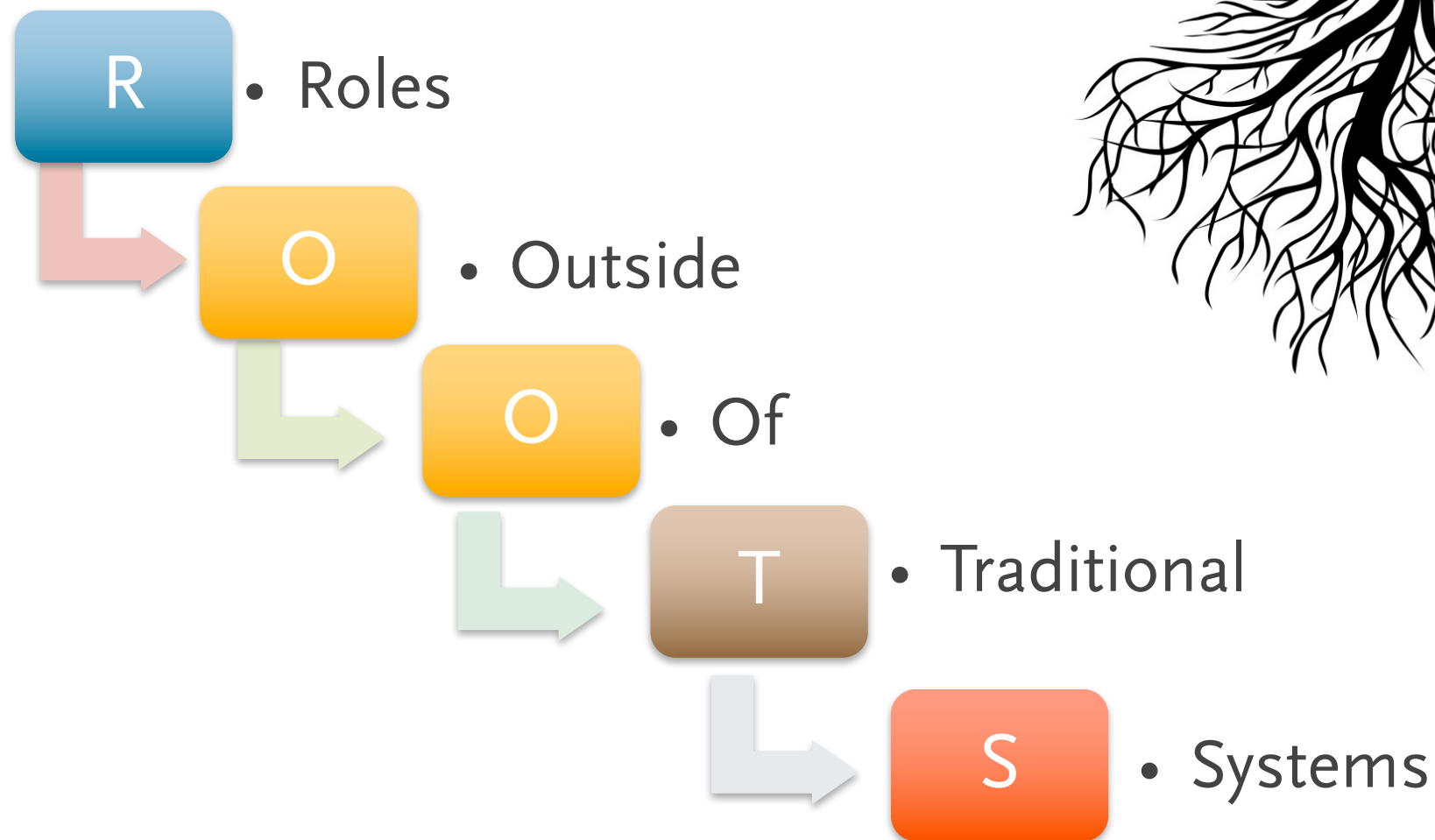
CCI Focus Areas

ROOTS Program

In partnership with Blue Shield of California Foundation, CCI will support between **5-7 clinics in California** over 12 months through a learning collaborative focused on the role of clinics in **addressing the social determinants of health.**



ROOTS Program



Key Objectives

- 1. **Support and build capacity** of clinics to use both information collected about individual patients' SDOH needs and community-level SDOH data
- 2. Identify and test ways to **integrate data** to improve health that have the potential to be sustainable over time without a strong reliance on grant funding
- 3. Clarify the **role of clinicians** and other team members to address SDOH and to integrate these roles into the fabric of the organization
- 4. Identify and develop **resources, tools, and lessons** to share with the larger safety net health care community

Target Audience

5-7 clinics
in CA

Clinics that have demonstrated a commitment to **addressing SDOH** and a commitment to **experiment and learn** with others will be invited to participate

Program Support & Delivery

Grants of \$35,000-\$60,000

2-3 In-Person
Convenings

Site Visits

Individual
Priority
Project

Peer-
learning
community

Toolkits,
resources
and
webinars

Access to
technical
experts

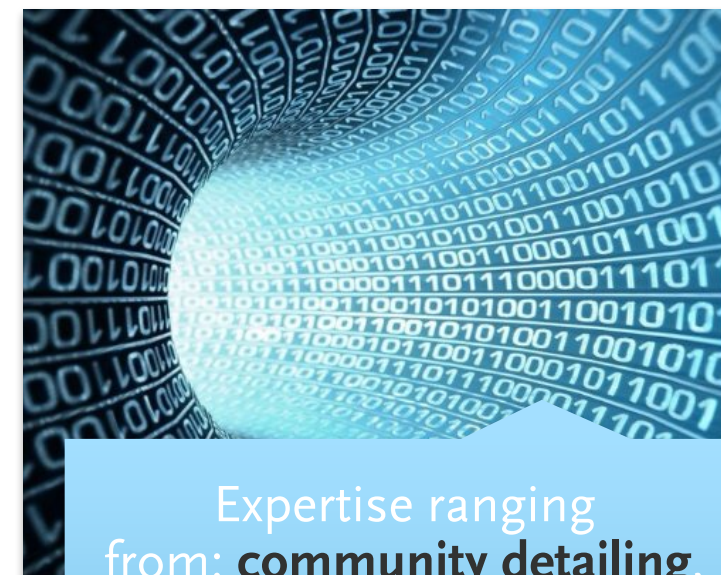
Example TA Support



Emphasis on using **human centered design & innovation** to engage & **co-design** solutions with community partners



Coaching support with a focus on developing **community level partnerships**



Expertise ranging from: **community detailing**, how to bring **data sets** together and leverage existing data tools, etc.

Phase 1: Data & Inquiry

September 2017-December 2017

- Understanding opportunities to **strengthen staff buy-in, support, and engagement** for addressing SDOH
- Understanding issues that arise when SDOH **data is collected from patients**
- **Collecting and integrating** data streams together to create a whole picture of the patients and community
- **Identifying and engaging** community partners to understand their priorities and needs



Phase 2: Development, Analysis, and Co-Design

January 2018-April 2018



- **Testing and clarifying** the roles of staff within clinics to address SDOH and identifying any new capabilities that are needed to enable staff to succeed in these new roles
- Identifying and strengthening **connections with community partners**
- Taking data to community partners to **prioritize the problem** trying to be solved, and co-designing ways to address the SDOH
- Beginning to develop **clear partnership** arrangements

Phase 3: Developing Next Steps for Action

May 2018-August 2018

- Documenting **internal workflows and protocols** to strengthen clinic infrastructure
- In partnership with community partners, creating a **plan for action**, including defining potential interventions informed by data and community input
- **Communicating and spreading** lessons within clinic and across the field



Applied Project: Clinic & Community Priority

Impact Areas:

Respond to **individual patients'** medical, behavioral and social needs

Respond to the medical, behavioral and social needs of **targeted patient population(s)**

Inform and drive local and state care **transformation efforts**

Projects that will NOT be Funded:

Projects that use grant money to hire new staff or create new roles

Projects that focus on **ONLY** screening or collecting patient-level SDOH data

Projects that use grant money to support established projects

What We're Looking For



What (Else) We're Looking For

- ❖ Early experience with **collecting** patient-level SDOH data and familiarity with tools (e.g., PRAPARE, IOM, homegrown tools);
- ❖ Early experience in **bringing together** multiple data sets to better understand the whole person;
- ❖ Experience in **partnering** with community groups to improve health;
- ❖ Openness to **incorporating innovation** approaches to co-design solutions with patients and partners.



Who's Eligible to Apply

Clinic corporations, ambulatory care clinics at public hospitals owned and operated by public hospitals (either at the hospital or in the community), and other **California-based** nonprofit health centers that provide comprehensive **primary care services to primarily underserved populations** are eligible to apply.

Examples include:

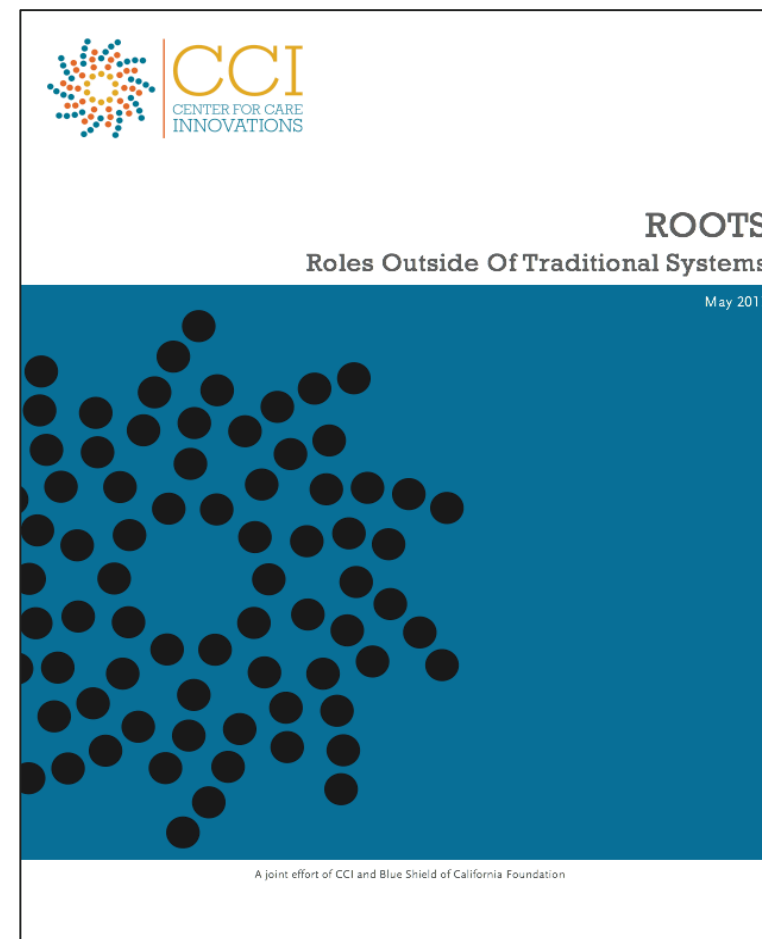
- Free-standing community clinics and health centers
- Ambulatory care clinics which are part of public hospital systems either located in the public hospital or out in the community
- Primary care health centers (including those sponsored by Public Health departments)
- American Indian Health Centers

How to Apply

Applicant organizations must submit the following materials:

1. ROOTS Application Form
2. ROOTS Narrative
3. ROOTS Budget
4. Tax Status Documentation
5. Letter of Leadership Support

**All materials must be received by 5 pm on
Tuesday, June 27, 2017.**



Important Dates and Timeline

Application Deadline

- Tuesday, June 27, 2017 at 5pm

Award Recommendations Announced

- Friday, July 28, 2017

Kickoff Webinar

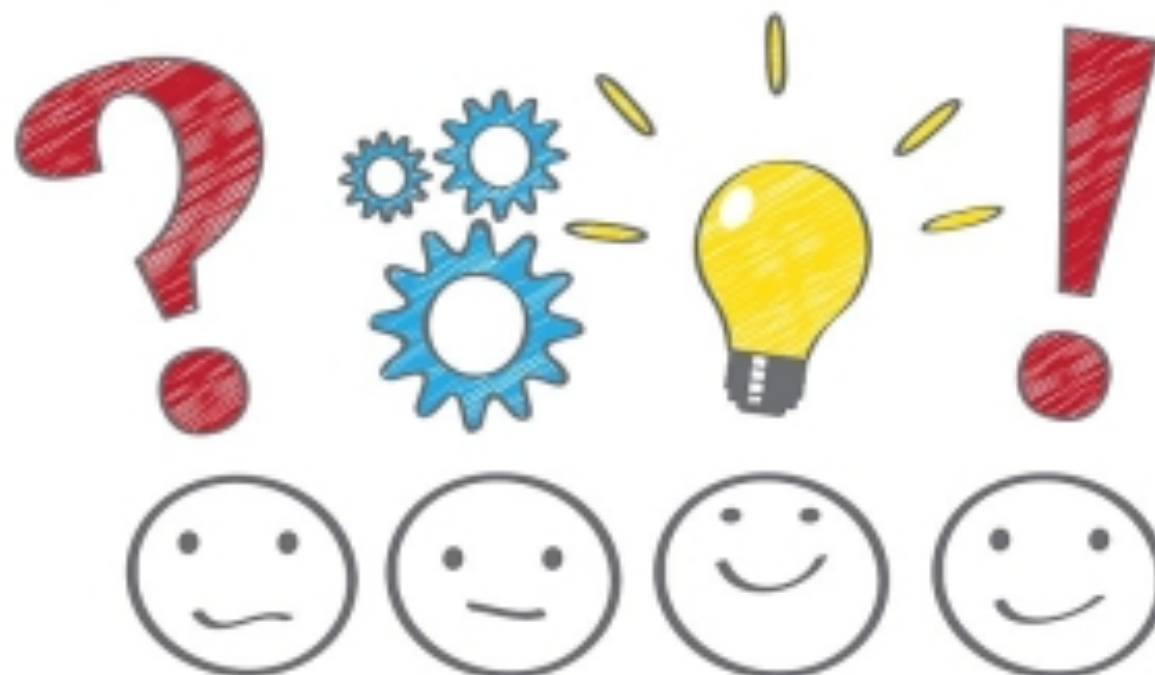
- Thursday, September 14, 2017

1st In-person Learning Session

- Thursday, October 5, 2017



Q & A





Thank you!

For questions contact:

Megan O'Brien
Value-Based Care Program Manager
Center for Care Innovations
mobrien@careinnovations.org

Veenu Aulakh
Executive Director
Center for Care Innovations
veenu@careinnovations.org